

Anchorage MS4 Street Sweeping Report for 2013

WMS Document No. CPr14001

MUNICIPALITY OF ANCHORAGE
WATERSHED MANAGEMENT PROGRAM

January 2014

Anchorage MS4 Street Sweeping Report for 2013

Document No. WMP CPr14001

WMS Project No. 95003

January 2014

Prepared for:

Anchorage MS4 Co-Permittees:
Alaska Department of Transportation and Public Facilities
Municipality of Anchorage

Prepared by:

Watershed Management Section
Public Works Department
Project Management & Engineering

ANCHORAGE MS4 STREET SWEEPING REPORT FOR 2013

TABLE OF CONTENTS

1.	PURPOSE.....	1
2.	STREETS AND PARKING LOTS DESIGNATED FOR SWEEPING.....	2
2.1.	TECHNICAL FEASIBILITY FOR SWEEPING.....	2
2.2.	DESIGNATED STREETS FOR 2013 SWEEPING	3
2.3.	DESIGNATED LARGE PUBLIC PARKING LOTS	4
3.	2013 SWEEPING PERFORMANCE REPORTS.....	7
3.1.	STREET SWEEPING PERFORMANCE REPORTS FOR 2013.....	7
3.2.	PARKING LOT SWEEPING PERFORMANCE REPORT FOR 2013.....	10
3.3.	PARTICLE SIZE DISTRIBUTIONS FOR SWEEPED MATERIALS.....	11
4.	2013 SWEEPING PERFORMANCE ASSESSMENT	13
4.1.	SUMMARY OF FINDINGS FROM 2013 & PREVIOUS SWEEPING ASSESSMENTS	13
4.2.	UNIT LOAD COMPARISON 2011-2013	18
4.3.	SWEEPING EFFECTIVENESS ASSESSMENT FOR 2013	19
5.	2013 MAPS AND DATA TABLES.....	21
5.1.	DESIGNATED STREETS AND GENERAL LOCATION MAPS	21
5.2.	ANCHORAGE MS4 DETAILED SWEEPING RECORDS FOR 2013.....	30
5.2.1.	<i>ADOT&PF 2013 Detailed Sweeping Reports.....</i>	<i>31</i>
5.2.2.	<i>CBERRRSA 2013 Detailed Sweeping Reports.....</i>	<i>34</i>
5.2.3.	<i>ARDSA 2013 Detailed Sweeping Reports.....</i>	<i>37</i>
5.2.4.	<i>ASD 2013 Detailed Sweeping Reports.....</i>	<i>61</i>
5.2.5.	<i>2013 Changes to Sweeping and Basis for Changes.....</i>	<i>63</i>

LISTS OF FIGURES AND TABLES

FIGURES:

FIGURE 3-1 REPRESENTATIVE PSD OF SWEPT MATERIALS	11
FIGURE 4-1 ANCHORAGE STREET SEDIMENT LOADING DATA: 1996.....	13
FIGURE 5-1 ANCHORAGE MS4 SWEEPING ‘GENERAL LOCATIONS’	22
FIGURE 5-2 MOA_ARDSA, SOUTH—2013 DESIGNATED SWEPT STREETS	23
FIGURE 5-3 MOA_ARDSA, NORTH—2013 DESIGNATED SWEPT STREETS.....	24
FIGURE 5-4 CBERRRSA, NORTH—2013 DESIGNATED SWEPT STREETS.....	25
FIGURE 5-5 CBERRRSA SOUTH—2013 DESIGNATED SWEPT STREETS	26
FIGURE 5-6 ADOT&PF AREA A—2013 DESIGNATED SWEPT STREETS	27
FIGURE 5-7 ADOT&PF AREA B—2013 DESIGNATED SWEPT STREETS.....	28
FIGURE 5-8 ADOT&PF AREA C—2013 DESIGNATED SWEPT STREETS.....	29

TABLES:

TABLE 2-1 LARGE PUBLIC PARKING LOTS (MOA).....	5
TABLE 3-1 ANCHORAGE MS4 SWEEPING SUMMARY, 2013.....	9
TABLE 4-1 2011 STREET SEDIMENT LOADING SAMPLING RESULTS	16
TABLE 4-2 2011-2013 UNIT LOAD COMPARISON	18
TABLE 5-1 ADOT&PF SPRING 2013 SWEEPING REPORT	31
TABLE 5-2 ADOT&PF SUMMER 2013 SWEEPING REPORT	32
TABLE 5-3 ADOT&PF FALL 2013 SWEEPING REPORT	33
TABLE 5-4 CBERRRSA SPRING 2013 SWEEPING REPORT.....	34
TABLE 5-5 CBERRRSA SUMMER 2013 SWEEPING REPORT	35
TABLE 5-6 CBERRRSA FALL 2013 SWEEPING REPORT	36
TABLE 5-7 ARDSA SPRING 2013 SWEEPING REPORT	37
TABLE 5-8 ARDSA SUMMER 2013 SWEEPING REPORT	45
TABLE 5-9 ARDSA FALL 2013 SWEEPING REPORT	53
TABLE 5-10 ASD 2013 SWEEPING REPORT	61
TABLE 5-11 CBERRRSA 2013 CHANGES TO SWEPT STREETS	63
TABLE 5-12 ADOT&PF 2013 CHANGES TO SWEPT STREETS.....	63

Anchorage MS4 Street Sweeping Report for 2013

1. Purpose

Alaska Pollutant Discharge Elimination System (APDES) Permit No. AKS-052558, Article II, Part B, Section 4.d(ii)-(v) requires the permittees, the Municipality of Anchorage (MOA) and the State of Alaska Department of Transportation and Public Facilities (ADOT&PF), to inventory and designate arterial and residential streets and large parking lots within the Anchorage Municipal Separate Storm Sewer System (MS4) for sweeping maintenance; to record and report sweeping performed along these systems on an annual basis; and to annually assess these sweeping practices relative to minimization of pollutant discharges from these systems into receiving waters. Specifically, permittees are required to submit:

- Sweeping maps: each year permittees must submit maps of the streets and parking lots that have been designated for sweeping that year and their proposed sweeping frequency relative to the frequencies specified in this permit. Permittees must also designate those streets that they deem 'technically infeasible' for sweeping.
- Sweeping records: permittees must submit annual records of the sweeping practices used, and the curb miles and volumes of materials swept for street and parking lots organized by sweeping event, general location, and sweeping frequency class. Analyses of particle size distributions for samples representative of swept materials must also be submitted.
- Sweeping assessment: permittees must annually prepare an assessment on the basis of submitted sweeping records of the effectiveness of MS4 sweeping completed that year in minimizing pollutant discharges to storm drains and receiving waters.

The permittees have completed and compiled these inventories, records and assessments and submit summaries of these data and findings in this report in compliance with this permit part. The report is organized into five major sections. Section 1.0 summarizes the purpose of this report. Section 2.0 identifies 2013 swept streets as well as those streets designated infeasible for sweeping. Section 3.0 summarizes sweeping records for 2013. Section 4.0 summarizes an assessment of the permittees' sweeping effectiveness for this year. Section 5.0 includes maps and additional summary tables described in Sections 2.0 through 4.0.

2. Streets and Parking Lots Designated for Sweeping

Permit Part II.B.4.d(i) requires permittees to map all streets and large public parking lots to be swept in the coming year and designate their assigned sweeping frequency relative to permit requirements. Further, Part II.B.4.d(iv) requires that permittees designate streets that are technically infeasible for sweeping and specify why. Finally Part II.B.4.d(v) requires that permittees annually ‘..identify any significant changes..’ in mapping of ‘..residential, arterial, and public parking lots..’ subject to regular sweeping under the permit and ‘..the basis for those changes.’ The following section summarizes this information. Section 2.1 identifies types of streets deemed technically infeasible for sweeping by the permittees. Section 2.2 identifies streets designated for sweeping within each of the permittees’ jurisdictions, and the sweeping management areas (‘general locations’) that the permittees’ use to organize sweeping efforts. Section 2.3 identifies the public parking lots designated as large and swept by the permittees. Any changes in swept features and the basis for those changes are also summarized in Section 2.2 and 2.3.

2.1. *Technical Feasibility for Sweeping*

Permittees must document areas where street sweeping is technically infeasible and why (Part II.B.4.d(iv)). The permittees specify the technical infeasibility of regularly sweeping a street based on two factors: surface type and cases where the combined character of speed, access and drainage type make regular sweeping unnecessary, disruptive and/or dangerous.

Unpaved road surfaces are not technically feasible for sweeping. Such surfaces of course will include dirt and gravel roadways but include as well those whose surfaces have been treated with applications of chemicals or asphaltic or other mixtures to create a smooth and temporarily hardened surface. Treatment typically results in only a short-term hardening of the road surface with a primary intent of smoothing the road surface for traffic over the summer season. However, the treatment also serves to temporarily bind particles to reduce dust and erosion. Sweeping can speed deterioration of these surfaces and increase mobilization of fines during runoff. Therefore, these roads are not swept but may be periodically re-graded or re-treated to reduce erosion and dust generation.

High-speed, high-traffic roadways (freeways and expressways), where access is limited and drainage is provided by open channels on both sides of the road, are also not regularly swept. Regular sweeping along these street segments is considered both technically infeasible and unnecessary. Regular sweeping is technically infeasible along these roadway segments because of the speed and volume of the traffic. Regular sweeping activity along these segments would present unpredictable danger to traffic as a slow-speed obstruction. It would also obviously limit for prolonged periods of time the utility of these roadways as high-speed thoroughways. From a more practical standpoint, regular sweeping along these segments is also generally unnecessary. Winter traction sand applications along these segments is less frequently done, significantly reducing sediment loading on the roadway. The sediment that does accumulate is rapidly removed

Anchorage MS4 Street Sweeping Report for 2013

by high-speed traffic along these segments. Wind and wheel energy generated by traffic very effectively move particulates off the paved surface and onto vegetated shoulder and median areas where these materials are collected on a seasonal or as-needed basis during shoulder maintenance.

2.2. Designated Streets for 2013 Sweeping

Permittees are required to identify and map all streets designated for sweeping and provide maps of streets swept in an annual report of these activities (II.B.4.d)(i) and (v)). Any changes in swept features and the basis for those changes must also be summarized. Sweeping for different parts of the Anchorage MS4 are performed by different operators, based on the jurisdictions of the MS4 owners (ADOT&PF and MOA) and the maintenance authorities assigned to different operators by the owners. Initial maps of Anchorage MS4 streets and public parking were compiled and submitted in the permittees' document 'Street Sweeping Management Plan: Anchorage MS4, November 2011', Appendix A (hereinafter, MS4 Sweeping Plan).

Through various means the owners, MOA and ADOT&PF, assign maintenance administrative authorities for the Anchorage MS4 to different agencies. Each maintenance administrative agency is assigned a specific geographic area covering different portions of the Anchorage MS4 and public parking facilities. ADOT&PF assigns maintenance authority for its entire Anchorage MS4 jurisdiction to its Maintenance & Operations Division, Central Region (ADOT&PF). MOA assigns maintenance authorities for various portions of its MS4 jurisdiction to different roads and drainage 'service areas', or to particular segments of streets and roads, through Municipal administrative and Assembly-codified authorizations. The primary maintenance administrative authorities (maintenance operators) for the Anchorage MS4 facilities regulated under II.B.4.d) include:

- The MOA Public Works Maintenance & Operations Division (ARDSA)
- The MOA Chugiak Eagle River Rural Road Service Area (CBERRRSA)
- The MOA Public Works Administration Division (PWA)
- The MOA Anchorage School District (ASD)
- The MOA Parks and Recreation Department (Parks).

Individual maintenance administrative authorities may further divide their assigned regions into smaller operational areas, which are roughly equivalent to the 'general locations' as specified in the permit at II.B.4.d.(v). These operational areas are used in this document as the basis for permit-required sweeping reporting. Each maintenance authority also designates streets within its region for sweeping (based on guidelines provided by the MS4 owners and as required by the MS4 storm water permit). Operational areas ('general locations') are shown in Figure 5-1 and streets that were designated for sweeping in 2013 are shown in Figures 5-2 through 5-8 in Section 5.1 for each of the primary maintenance administrative agencies for the Anchorage MS4.

Changes in mapping of streets designated for sweeping have been made during the 2013 reporting period reflecting both changes in features swept as well as in criteria used to classify a designated street to a particular EPA street sweeping frequency category (i.e.,

Anchorage MS4 Street Sweeping Report for 2013

arterial or residential). Changes in streets swept are tabulated in Tables 5-11 and 5-12 in Section 5.2.5 and are summarized below.

In 2013 ARDSA reported no changes in management practices or streets designated for sweeping from its 2012 reporting period.

In 2013 CBERRRSA added 7 new street segments to its sweeping list (Table 5-11) as a result in changes in sweeping feasibility (road surfacing changes and new road construction), and jurisdictional agreements with ADOT&PF. CBERRRSA reported 5 street segments had a change in sweep practice in 2013 in order to increase overall sweeping efficiency. Four of those segments were swept using kick brooms in 2012, and were swept using mechanical sweepers and tandem vacuum trucks in 2013 (and in future years). One street segment had a change in sweep practice from using mechanical sweepers and vacuum trucks to using kick brooms in 2013.

In 2013 ADOT&PF reports it added 2 new street segments to its inventory of streets it is responsible for sweeping (Table 5-12), and all were swept according to their frequency class in 2013. ADOT&PF removed 2 street segments from its regular 2013 sweep list because they were under construction during the 2013 street sweeping period. The two street segments under construction were swept separately, in terms with the construction permit. Additionally, 2 street segments were removed from the ADOT&PF sweeping list as sweeping jurisdiction for the segments were transferred to ARDSA and CBERRRSA in 2013 (and in future years), according to maintenance agreements between the agencies. Otherwise, ADOT&PF reported no changes in swept streets or management practices from its 2012 reporting period.

2.3. Designated Large Public Parking Lots

Section II.B. 4.d specifies that permittees must identify and designate those large parking lots for sweeping that serve schools, cultural facilities, plazas, sports and event venues and similar facilities. The permittees have interpreted a large public parking lot to be any such lot that has a total exposed parking footprint within a single parcel or a complex of closely associated parcels of 2 acres or larger (see the Anchorage MS4 Sweeping Plan, p4).

ADOT&PF identified no ADOT&PF-owned public parking lots that met these criteria. MOA identified 62 large public lots meeting these criteria. Maps showing location of these lots are included as Appendix C in the MS4 Sweeping Plan. The designated MOA large public parking lots serve 51 schools, 9 parks, one cultural facility and one events venue. The median size of all 62 designated MOA large public parking lots is 2.5 acres. The largest lot is approximately 13.3 acres in size with only four lots 10 acres or larger in size. Four of the designated lots are between 5 and 10 acres in size, 15 lots are 3 to 5 acres in size, and 39 lots are 2 to 3 acres in size. No changes were made to the large parking lot sweeping list for 2013. Table 2-1 below lists all large public parking lots currently identified by the permittees.

Anchorage MS4 Street Sweeping Report for 2013

Table 2-1 Large Public Parking Lots (MOA)

Name	Type	Area, ft ²
Hilltop Ski Area	Park	88000
Ravenwood Elementary	School	89075
Girdwood K-8 School	School	89969
Davis Park	Park	90000
Muldoon Elementary	School	92049
Turnagain Elementary	School	93900
Susitna Elementary	School	94200
Harry J. McDonald Memorial Center	Park	95000
Mountain View Elementary	School	95101
Huffman Elementary	School	95228
Ruth Arcand Park	Park	96000
Rogers Park Elementary	School	96305
Polaris K-12 School	School	97293
Wonder Park Elementary	School	97567
Williwaw Elementary	School	97956
O'Malley Elementary	School	98189
Bear Valley Elementary	School	98474
Rabbit Creek Elementary	School	99865
Far North Bicentennial/ Hillside Park	Park	100500
Mears Middle School	School	102000
Alpenglow Elementary	School	102825
Trailside Elementary	School	103834
Campbell Elementary	School	104000
Eagle River Lion's Club	Park	104000
Gladys Wood Elementary	School	104344
Bowman Elementary	School	106000
Spring Hill Elementary	School	106000
Lake Otis Elementary	School	106173
North Star Elementary	School	106780
Bayshore Elementary	School	106792
Northern Lights ABC School	School	108974
Albrecht Field	Park	113300
Lake Hood Elementary	School	114600
Central Middle School/Chugach Optional Elementary	School	116792
Northwood ABC Elementary	School	118491
Birchwood ABC Elementary	School	119236
Kasuun Elementary	School	119441
Tyson Elementary	School	120690
Willow Crest Elementary	School	124285
Russian Jack Elementary	School	128685
South Anchorage Sports Park	Park	140000
Chugiak Elementary	School	140875
Loussac Library	Cultural	141000
King Career Center	School	144663
Kincaid Park	Park	145000
Gruening Middle School	School	150000

Anchorage MS4 Street Sweeping Report for 2013

Name	Type	Area, ft ²
Kincaid Elementary	School	152789
Clark Middle School	School	168224
Hanshew Middle School	School	169175
Romig Middle/ West High Schools	School	176826
Begich Middle School	School	177442
Wendler Middle School	School	193293
Goldenview Middle School	School	201993
Mirror Lake Middle School	School	203260
Eagle River High School	School	275595
Chugiak High School	School	325000
South High School	School	340669
Bartlett High School	School	412961
Sullivan/Boeke Arenas	Events	457000
East High School	School	459000
Service High School	School	473795
Dimond High School/Chinook Elementary	School	580883

3. 2013 Sweeping Performance Reports

Permit Part II.B.4.d)(v) requires permittees to report sweeping performance annually in terms of specific factors and to assess sweeping effectiveness in minimizing discharge of pollutants to storm drains and creeks based on those factors. Sweeping performance reports must at minimum identify and map the actual streets and parking lots that were swept in the reporting year. In addition, permittees must compile and report specific sweeping performance factors including:

- Sweeping practices used,
- Swept ‘curb miles’
- Volume or weight of swept materials, and
- Particle size distributions of representative swept materials.

The permit specifies that sweeping performance information is to be organized and reported, in some respect, by date, general location, and sweeping ‘frequency category’ (defined in the permit as Arterial or Residential streets, and Parking). However, whatever the exact organizational structure elected by the permittees for the performance report information, all these factors are specifically to be used in assessing the effectiveness of MS4 sweeping on limiting discharge of pollutants to the MS4 and receiving waters. This section summarizes sweeping performance records sorted by maintenance agency for both streets (Subsection 3.1) and parking (Subsection 3.2). Subsection 3.3 describes particle size distribution measures for street materials swept by each of the operating agencies. In Section 4, we use these performance records, along with other information, to assess effectiveness of the 2013 MS4 sweeping program.

3.1. Street Sweeping Performance Reports for 2013

The permittees have organized their sweeping performance data to reflect both significant differences in drainage types across the MS4 and variations in street sediment loading between those drainage types. As described in their MS4 Sweeping Plan, the permittees use different sweeping practices for streets having curb and gutter (CG) drainage as opposed to those having open channel (OC) or ditch drainage. For streets with curb and gutter drainages, sediments are concentrated along the gutter pan and readily available for mobilization in washoff events. For these streets, swept materials are always collected during sweeping, and the removed volumes can be readily inventoried. Conversely, sediments from streets with open channel drainages tend to become concentrated onto the adjacent vegetated shoulders where runoff events are much less likely to mobilize them. Along these streets the most common sweeping practices are ones that ‘kick’ the sediments left on the street pavement onto the same vegetated shoulder (to be removed during later shoulder maintenance and ditch ‘dressing’). As a result, inventories of the volumes of sediment swept from open channel streets are usually not available, at least not as part of sweeping performance records.

Given these practices, reporting sweeping information for curb miles alone, as the permit specifies, is problematic. Reporting only those streets having ‘curb miles’ (i.e., curb and gutter type streets) as specified in the permit would obviously bias measurement of total Anchorage MS4 sweeping performance. Similarly, using total street miles when

Anchorage MS4 Street Sweeping Report for 2013

assessing the total volume of swept materials will bias loading and efficiency estimates when the only swept sediment volumes recorded are for curb and gutter streets but open channel street miles are included in the analysis. Finally, potential for biasing analysis is even further compounded considering differences in sediment loading between drainage types (and sweeping frequency categories).

To control for these sweeping practices and characteristics, sweeping performance information for Anchorage MS4 streets is collected and sorted by a number of factors. These include sweeping frequency type and drainage type, the MS4 maintenance operator, the sweeping event (measured by the sweeping completion date range; spring, summer, fall), and the operational area ('general location'). Sweeping frequency types include 'Arterial' and 'Residential' categories as already described in the permittees MS4 Sweeping Plan.

Sweeping performance information reported for the Anchorage MS4 includes total swept volumes (in cubic yards) referenced to operational areas ('general locations' in the permit language) and to 'Street Miles', 'Curb Miles', and/or 'Pick Up Miles'. 'Street Miles' for all designated swept streets are included in this performance report and are calculated as the total centerline lengths of swept street segments. Where a 'kick' type of sweeping practice is used along open channel roads (i.e., swept sediments are not collected), total swept volume will not be known and Street Miles is the only sweeping information reported. Any estimate of swept volumes for these streets must be calculated using the swept mileage and an estimate of street sediment loading present at the time of the sweeping event for the particular sweeping frequency category (arterial or residential). Because sweep practices that collect swept material (i.e., swept volumes are inventoried) are used on both curb and gutter and open channel drainage type roads, the term 'Pick Up Miles' is more appropriate and used in place 'Curb Miles' for this report. Pick Up Miles optimally represent the total actual length of road shoulder swept, for the case of open channel road segments, and the actual length of curbed drainage swept, for curb and gutter road segments. Where this is not known, Pick Up Miles are estimated as twice the length of the swept streets along which the sediments are collected. Where possible, the Anchorage MS4 sweeping performance report also includes an estimate of the unit swept volume (cubic yards per Pick Up Mile) for each combination of frequency type and drainage type.

2013 sweeping performance records for the principle Anchorage MS4 street maintenance operators (ADOT&PF, ARDSA, and CBERRRSA) are summarized for all three sweeping events in Table 3-1 below. Note that the two tandem sweeps required for arterial frequency category streets are summarized under the single spring event shown. Operational areas ('general locations') for these maintenance operators are as described in Section 2.2. More detailed sweeping summary tables for each of the maintenance operators are included in Section 5.2, including all required permit reporting elements.

In general in 2013 all Anchorage MS4 operators completed sweeping of designated streets in accordance with permit requirements using the various practices as described in the previously published MS4 Sweeping Management Plan. Sweeping completeness for

Anchorage MS4 Street Sweeping Report for 2013

designated streets overall was high though this varied somewhat from operator to operator (see detailed records for each operator in Section 5.2).

Table 3-1 Anchorage MS4 Sweeping Summary, 2013

Spring 2013						
	EPA Category	Drainage Type	Street Miles	PickUp Miles	Total Volume* (cyds)	Unit Volume* (cyds/mile)
DOT	Arterial	OC	8.3	10.7	128.0	11.9
		CG	39.0	102.5	3695.0	36.0
		Mixed	43.2	118.1	3229.0	27.3
	Residential	OC	52.3	104.6	654.0	6.3
		CG	4.1	12.0	220.0	18.4
		Mixed	28.4	59.0	507.0	8.6
ARDSA	Arterial	OC	0.0			
		CG	40.8	131.8	3689.7	28.0
		Mixed			462.5	
	Residential	OC	112.5		24.3	
		CG	464.7	837.6	1295.0	16.3 ¹
		Mixed			7377.4	
CBERRRSA	Residential	OC	154.1	77.6	309	4.0
		CG	30.0	60.0	546	9.1
		Mixed	14.6	29.1	57	2.0
Summer 2013						
	EPA Category	Drainage Type	Street Miles	PickUp Miles	Total Volume* (cyds)	Unit Volume* (cyds/mile)
DOT	Arterial	OC	8.3	10.7	29.0	2.7
		CG	39.0	102.5	465.0	4.5
		Mixed	43.2	118.1	582.0	4.9
	Residential	OC	52.3	104.6	290.0	2.8
		CG	4.1	12.0	63.0	5.3
		Mixed	28.4	59.0	245.0	4.2
ARDSA	Arterial	OC	0.0			
		CG	40.8	131.8	488.2	3.7
		Mixed			60.6	
	Residential	OC	112.5		15.9	
		CG	464.7	837.7	96.5	1.4 ¹
		Mixed			2954.1	
CBERRRSA	Residential	OC	154.1	77.6	No data reported	
		CG	30.0	60.0	No data reported	
		Mixed	14.6	29.1	No data reported	

Anchorage MS4 Street Sweeping Report for 2013

Fall 2013						
	EPA Category	Drainage Type	Street Miles	PickUp Miles	Total Volume* (cyds)	Unit Volume* (cyds/mile)
DOT	Arterial	OC	8.3	10.7	37.0	3.5
		CG	39.0	102.5	806.0	7.9
		Mixed	43.2	118.1	712.0	6.0
	Residential	OC	52.3	104.6	347.0	3.3
		CG	4.1	12.0	73.0	6.1
		Mixed	28.4	59.0	255.0	4.3
ARDSA	Arterial	OC	0.0			
		CG	40.8	131.8	223.2	1.7
		Mixed			17.3	
	Residential	OC	112.5		1.9	
		CG	464.7	837.7	297.3	3.7 ¹
		Mixed			2579.8	
CBERRRSA	Residential	OC	130.3	31.0	27	0.9
		CG	8.9	17.8	27	1.5
		Mixed	59.6	119.7	69	0.6

1..inferred results: All ARDSA data reported in mixed drainage format. <10% data suitable for drainage type inference and analysis.

* Volumes represent only swept materials collected along reported/estimated Curb/PickUp Miles

ADOT&PF reported 100% completeness for all road segments and operational areas for the spring, summer, and fall sweep periods. ADOT&PF did report that, due to late spring snowfall, the spring sweeps did not begin until early May and were not completed until the 10th of June, 10 days beyond the permit prescribed spring sweep period (though all ADOT&PF roads did receive the required number of sweeps for the 2013 reporting period). CBERRRSA reported 100% completeness for the spring and fall sweep periods with no reported road segments or operational areas falling below permit requirements. For the 2013 summer sweep period CBERRRSA reported that roads were swept 'as needed' (as prescribed in the Street Sweeping Management Plan) and did not report any volumes of swept materials. This suggests that only open channel type roads swept with kick broom type sweepers were swept in the summer period. ARDSA reported a sweeping completeness of 100% for designated streets within its administrative authority for the spring and fall sweep periods. For the summer sweep period, ARDSA reported sweeping all of its arterial and collector type roads, and reported sweeping its residential roads 'as needed'.

3.2. Parking Lot Sweeping Performance Report for 2013

Sweeping performance was reported by the Anchorage School District for all 51 public schools on the large public parking lot list as designated in Section 2.3, for a completion of 100%. No basis for changes in number of swept school parking lots was otherwise submitted. Exact sweeping dates were not reported, though separate volumes of swept material were reported for two sweeping periods, spring and fall, indicating that each of the 51 school lots were swept twice in 2013. Reported total swept volumes for individual

Anchorage MS4 Street Sweeping Report for 2013

parking lots ranged from 7 to 64 cubic yards per lot, for a total of 1068 cubic yards collected during 2013 sweeping efforts. Detailed sweeping reports for the large school parking lots are included in Section 5.2. No other reports were submitted for sweeping performed in 2013 for the other large public parking lots as listed in Table 2-1.

3.3. Particle Size Distributions for Swept Materials

Permit requirements at II.B.4.d)(v) require that particle size distribution be evaluated for a representative sample of swept materials. Representative samples of swept street materials (no samples were available from parking lots) were collected by subsampling temporary sweeping storage piles built up by each MS4 operator and the composited samples were then submitted to a certified laboratory for analysis. Particle size distributions representative of samples collected during 2013 sweeping events are included in Figure 3-1 below.

Figure 3-1 Representative PSD of Swept Materials

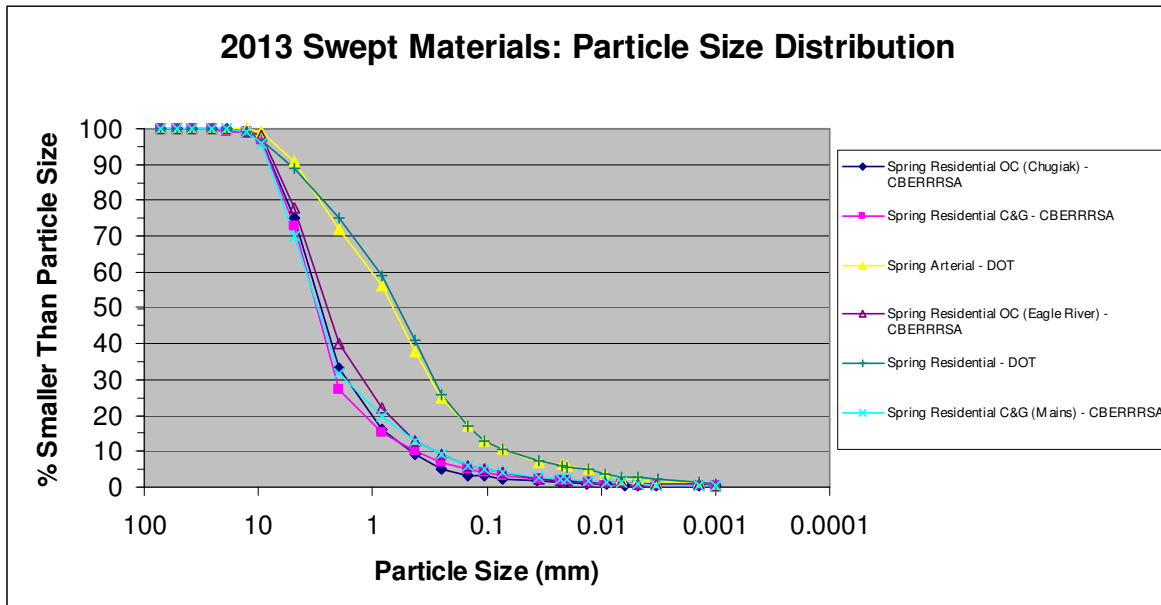


Figure 3-1 includes particle size distributions (PSDs) of samples collected from temporary storage piles generated from street sweeping. In 2010 and 2011, samples were collected from street surfaces before and after each sweeping event, in order to compare pre- and post-sweep street conditions. Analysis of data suggests reduced sweeping practices efficiency in removing the mid-range fine particles—from about 75 to 1000 micron. Available data are inconclusive for estimation of sweeping efficiencies for very fine particles (finer than 75 micron) but do suggest that current sweeping practices may have limited competency at removing particles smaller than 75 micron. Assessment of removal rates for these fine particles would require more resolute sampling for street-collected samples (use of vacuum sampling techniques).

Particle size distributions for 2013 swept materials, collected from street sweeping temporary storage piles, show similar data ranges, and appear to be grouped somewhat by operator. Dirt from CBERRRSA's piles appears to have the highest proportion of coarse grained materials, with ADOT&PF having the highest proportion of fined grained

Anchorage MS4 Street Sweeping Report for 2013

materials. This is likely due to differences in original purchase specifications for winter traction sand and to the differences in road speeds typical of each operator's jurisdiction.

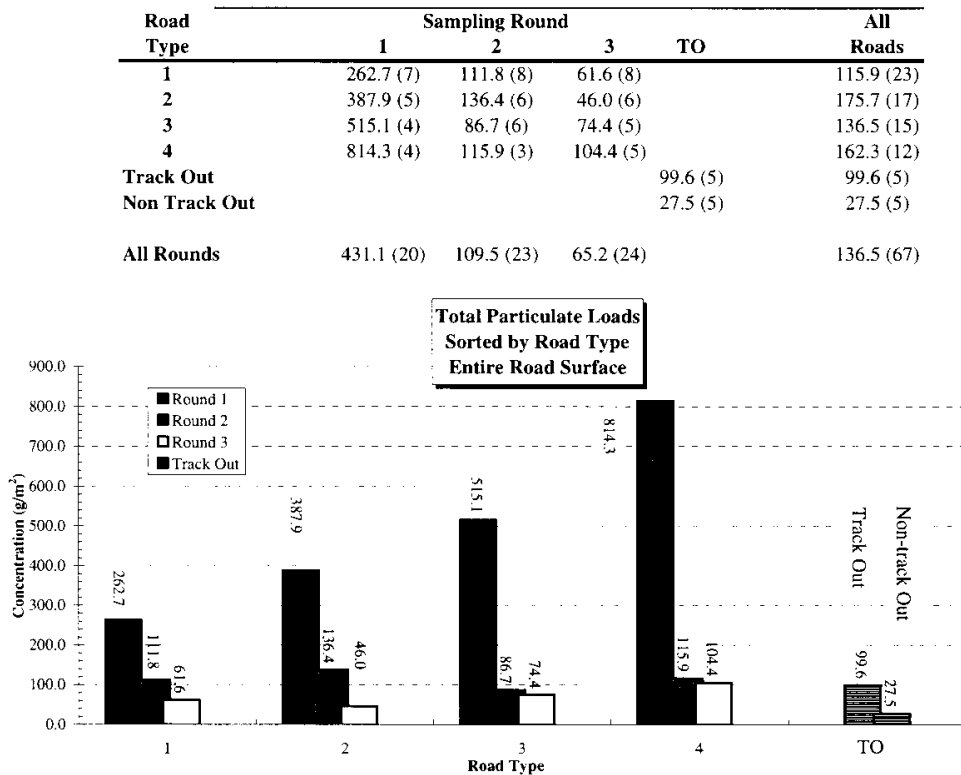
4. 2013 Sweeping Performance Assessment

Part II.B.4.d)(v) requires the permittees to ‘perform annual assessments of street sweeping effectiveness to minimize pollutant discharges to storm drains and creeks’ on the basis of the performance factors required to be reported under the permit. To help in this assessment the permittees completed additional sampling of street sweeping activities in 2010, 2011, and 2013 and reviewed sampling efforts and studies performed under earlier Anchorage MS4 permit terms and in other areas nationwide. Section 4.1 summarizes these additional efforts relative to the permittee’s 2013 street sweeping performance. Section 4.2 provides a comparison of unit loads (cubic yards per pick up mile and pounds per pick up mile) for swept dirt for the years 2011-2013. Based on both this additional information and current performance reports, Section 4.3 summarizes the effectiveness of the permittees’ 2013 sweeping program as required under Part II.B.4.d)(v).

4.1. Summary of Findings from 2013 & Previous Sweeping Assessments

Street sediment loading data collected in 2011, 2013, and in previous Anchorage permit terms were used to support assessment of sweeping effectiveness in 2013 for the Anchorage MS4. These additional data are briefly summarized in this section.

Figure 4-1 Anchorage Street Sediment Loading Data: 1996



Road type: 1-Residential, 2-Collector, 3-Minor Arterial, 4-Major Arterial; all curb & gutter
 Rounds: 1-winter initial load, 2-post spring sweep, 3-mid-summer
 From: “MOA Street Sediment Loading Assessment”, WMP AP#97001, 1997

Anchorage MS4 Street Sweeping Report for 2013

The permittees have collected significant data characterizing street sediment loading (at similar street strata) and street sweeping performance (at the resolution of overall local practices). Significant street sediment sampling efforts were conducted in 1996 (WMS document WMP APr97001, “MOA Street Sediment Loading Assessment”) and again in 2000 (WMS document WMP APr00003, “Street Sediments and Adsorbed Pollutants”) during the permittees’ first permit term. Later analyses of these data by the permittees specifically addressed street sediment buildup rates (Wheaton et al., op. cit.) and effectiveness of Anchorage street sweeping performance (WMS document WMP APr02002, 2002, “Anchorage OGS and Street Sweeping as Storm Water Controls”). Sampling in all earlier studies was performed only along curb and gutter type drainages and no data was collected for open channel roads. Nevertheless, data for curb and gutter drainage types was thorough and no significant changes have been made in application rates or practices for street sanding since these studies were completed. The sediment loading results reported in the 1996 study is summarized in Figure 4-1. Street sediment loading values in pounds per pick up mile can be approximated by multiplying the gm/m² values in Figure 4-1 by 51.2 for residential and collector streets and 77.7 for arterial streets.

The Watershed Management Services section of the Municipality performed additional sampling during 2010 and 2011 to supplement the earlier street sediment loading data and to complement the detailed sweeping performance data collected by the MS4 maintenance operators. Sampling program goals were to approximately quantify sweeping efficiencies and sediment buildup rates between scheduled sweeping events. The sampling strategy applied was to characterize the initial street sediment loading conditions prior to any seasonal sweeping and then estimate sediment loads remaining after each of the seasonal sweeps (relative to each of the major road and drainage type categories).

To achieve this, during the 2010 and 2011 sweeping season WMS sampled transects across select MS4 streets at a total of 118 stations. The stations were selected to broadly represent street frequency category and drainage types (arterial open channel, arterial curb & gutter, collector open channel, collector curb & gutter, residential open channel and residential curb & gutter) from the jurisdictions of all the Anchorage MS4 maintenance operators.

At each station, WMS swept transects 1.5 feet wide across the paved road and gutter/paved shoulder surfaces from centerline, or median curb, to outside curb or edge of paved shoulder, (i.e., one-half of the full curb-to-curb road width at the station) and collected and bagged the materials for later analysis. A systematic photographic record was also made of conditions at each site. Sampling was scheduled at each station immediately prior to initial spring sweeping (to capture the entire winter sediment load remaining on the street after breakup), and then shortly after each of the spring, summer and fall sweep events to measure the sediment load remaining on the street surfaces after sweeping had been completed (based on volumetric analysis of mineral and organic content).

Anchorage MS4 Street Sweeping Report for 2013

All sampling was performed under dry conditions to minimize water content of the collected transect samples. Street sediment samples collected from each swept transect were analyzed by transferring the sample to a graduated cylinder, consolidating the sample by lightly tapping the cylinder, and measuring the total sample volume, in milliliters. After the initial volumetric measurement was made, samples were gently shaken in the cylinder to promote gravimetric separation of any fibrous organics from mineral constituents. Measurements were then made of the volumes of separated fractions of organic and mineral materials. Select samples and composited samples of collected street sediments were also submitted for laboratory testing for coarse- and fine-grain particle size distribution and organic content (by ignition). All results were tabulated and digitally archived.

Quality control review of all data suggests a reasonably comparable, complete, and representative data set was obtained. However, sample populations were small for some street categories, weakening inferences drawn from analyses of a fraction of the collected data. Specifically, small sample populations for some street and drainage categories resulted from a variation in sample collection protocols for these streets. As a result, some of the total sample counts ('n') were significantly reduced for some event/categories (Table 4-1). Specifically, the arterial curb and gutter category for all events is represented by a very small sample population count of 7. As a result of the low sample counts, the arterial curb and gutter data may not be adequate to resolve the normal character of street sediment for this street category. Otherwise, sample populations for all other sweeping event/street categories are considered adequate to provide reasonably representative information at the exploratory level of this investigation.

Summary statistics of the sampling results are tabulated in Table 4-1 below. Original WMS street dirt sampling data is in units of milliliters per 1.5 foot transect sample collected across one-half the curb-to-curb road width at the sample station. However, for ease of comparison to the permittees' street sweeping performance statistics (Section 3) these measurements have been normalized to a 'unit load' in the table in terms of pounds per pick up mile. Normalization was done by assuming a porosity for the samples of 0.26 and a specific gravity for the solid materials of 2.67, and then adjusting for the sampled transect area using the following formulas:

$$(\text{mL sample}/1.5' \text{ transect})(0.74)(2.67\text{gm}/\text{cm}^3)(\text{cm}^3/\text{ml})(1\text{lb}/454\text{gm}) = \text{lbs sample}/1.5' \text{ transect}$$

$$\triangleright (\text{lbs sample}/1.5' \text{ transect})(5280'/\text{pick up mile}) \cong \text{lbs}/\text{pick up mile}$$

Similarly, cubic yards/pick up mile as reported in the performance summary in the preceding section can be approximately converted to pounds per pick up mile, correcting for voids and neglecting the weight of any water content, as follows:

$$(\text{cyd}/\text{pick up mile})(27\text{ft}^3/1\text{cyd})(2.67)(0.74)(62.4\text{lbs}/\text{ft}^3) = \text{lbs}/\text{pick up mile}.$$

Anchorage MS4 Street Sweeping Report for 2013

Table 4-1 2011 Street Sediment Loading Sampling Results

		<u>Spring</u>	<u>Spring</u>	<u>Summer</u>	<u>Fall</u>		
		<u>Pre-Sweep</u>	<u>Post-Sweep</u>	<u>Post-Sweep</u>	<u>Post-Sweep</u>		
		Unit Load	Lbs/pu mile	Lbs/pu mile	Lbs/pu mile	Lbs/pu mile	
ARTERIAL	OC	<i>Min</i>	704	168	0	0	
		<i>Max</i>	37531	5361	1348	2420	
		<i>Median</i>	13021	2022	352	827	
		<i>n</i>	23	23	19	23	
	C&G	<i>Min</i>	2052	337	459	337	
		<i>Max</i>	51900	6280	7812	7353	
		<i>Median</i>	8885	995	1470	1876	
		<i>n</i>	7	8	8	8	
	COLLECTOR	OC	<i>Min</i>	612	0	0	0
			<i>Max</i>	15012	827	1011	1271
<i>Median</i>			7582	444	260	321	
<i>n</i>			16	16	16	16	
C&G		<i>Min</i>	2757	367	0	0	
		<i>Max</i>	24510	2634	2144	1041	
		<i>Median</i>	9421	1087	467	390	
		<i>n</i>	18	24	24	24	
RESIDENTIAL		OC	<i>Min</i>	0	0	0	0
			<i>Max</i>	17463	2022	2236	1654
	<i>Median</i>		2451	781	643	474	
	<i>n</i>		24	24	24	24	
	C&G	<i>Min</i>	2068	0	0	122	
		<i>Max</i>	16544	3768	3829	1960	
		<i>Median</i>	5821	1041	919	643	
		<i>n</i>	21	21	21	21	

Sampling units – ml sediment/(1.5' wide transect)(½ width curb-to-curb); Unit load – pounds/pu mile; n – sample count

Note that the sediment load per pick up miles presented here is generally as described earlier, representing the total sediment present along a road segment, relative to the total length of curb or paved shoulder present along that road segment. For our sampling we make the assumption that the total length of curb or paved shoulder along our sampled roads is twice the length of the road (i.e., only two curbs are present along the road). Also note that the term 'pick up mile' in our sampling is used as a generic term to refer to both Curb Miles and Pick Up Miles defined earlier for curb and gutter and open channel drainage types, respectively. Finally note that we have not controlled for pavement width (for example, the number of trafficking lanes, parking lanes, turn-out lanes, median lanes, etc.) except for that that is inherent in the sweeping frequency categories used (arterial,

Anchorage MS4 Street Sweeping Report for 2013

collector, residential). However, at the scale of this analysis (areawide and at two levels of traffic load), we believe these data to be usefully representative.

In 2013 sampling of street sediment was conducted to estimate sediment loading and the character of particulates on Anchorage streets, relative to street sweeping practices. Ten 300-500ft long arterial stations and fifteen 300ft long residential stations were selected from amongst swept streets in the Anchorage Bowl. Stations were divided up into 1ft transect intervals and ten 0.5ft transects along each station were selected at random for sampling. At each transect street sediment samples were collected, from centerline to curb (half the total curb to curb width), using a high velocity backpack mounted vacuum with a custom nozzle modified to collect material from a 0.5ft swath. Sample materials collected were labeled and bagged and transported to a local certified material testing laboratory to be dried and weighed. Using the laboratory data, unit loading (grams/meter²) and liner loading (pounds/full width curb mile) were then calculated. Arterial stations were sampled 3 times and residential stations were sampled 4 times through out the 2013 sweep season, with transects selected at random for each event.

Results of the 2013 sampling efforts showed median values for 2013 post-sweep loadings were approximately 2300 lbs/full width curb mile for residential streets and 4100 lbs/full width curb mile for arterial streets (total sediment load across entire curb to curb width for one linear mile of road surface). For more information regarding the 2013 sampling program and results please see WMS document WMP Apr14001, "Anchorage Street Sweeping and Storm Water Controls: 2013 Performance Evaluation" (Appendix E-2 of the 2013 APDES report).

Anchorage MS4 Street Sweeping Report for 2013

4.2. Unit Load Comparison 2011-2013

Swept volume data, collected over the past three years, have been analyzed and where possible have been converted to unit load values (cubic yards/pick up mile), to give a measure of what volume of dirt is being swept up per pick up mile for each different operator and sweep frequency category. Cubic yards per pick up mile can then be converted to pounds per pick up mile using the formula described in Section 4.1. Table 4.2 shows unit load in both cubic yards per pick up mile and pounds per pick up mile for the summer and fall sweep periods for 2011, 2012, and 2013.

Table 4-2 2011-2013 Unit Load Comparison

2013			Summer 2013		Fall 2013	
Operator	EPACategory	DrainageType	UnitVolume(cyds/mile)	UnitWeight(lbs/mile)	UnitVolume(cyds/mile)	UnitWeight(lbs/mile)
DOT	Arterial	OC	2.7	8987.8	3.5	11650.9
		C&G	4.5	14979.7	7.9	26297.7
		Mixed	4.9	16311.3	6	19973.0
	Residential	OC	2.8	9320.7	3.3	10985.1
		C&G	5.3	17642.8	6.1	20305.8
		Mixed	4.2	13981.1	4.3	14314.0
ARDSA	Arterial	C&G	3.7	12316.7	1.7	5659.0
	Residential	C&G	1.4	4660.4	3.7	12316.7
CBERRRSA	Residential	OC	-	-	0.9	2995.9
		C&G	-	-	1.5	4993.2
		Mixed	-	-	0.6	1997.3

2012			Summer 2012		Fall 2012	
Operator	EPACategory	DrainageType	UnitVolume(cyds/mile)	UnitWeight(lbs/mile)	UnitVolume(cyds/mile)	UnitWeight(lbs/mile)
DOT	Arterial	OC	3.5	11650.9	3.5	11650.9
		C&G	4.7	15645.5	6.8	22636.0
		Mixed	3	9986.5	5.2	17309.9
	Residential	OC	2.5	8322.1	3.4	11318.0
		C&G	4.3	14314.0	4.3	14314.0
		Mixed	3.1	10319.4	3.9	12982.4
ARDSA	Arterial	C&G	4.1	13648.2	2.8	9320.7
	Residential	C&G	2.6	8655.0	7.2	23967.6
CBERRRSA	Residential	OC	1.5	4993.2	0.8	2663.1
		C&G	3.3	10985.1	2	6657.7
		Mixed	0.8	2663.1	0.8	2663.1

2011			Summer 2011		Fall 2011	
Operator	EPACategory	DrainageType	UnitVolume(cyds/mile)	UnitWeight(lbs/mile)	UnitVolume(cyds/mile)	UnitWeight(lbs/mile)
DOT	Arterial	OC	3.8	12649.5	2.7	8987.8
		C&G	3	9986.5	3.8	12649.5
		Mixed	3.6	11983.8	2.1	6990.5
	Residential	OC	2.3	7656.3	1.4	4660.4
		C&G	3.9	12982.4	3.7	12316.7
		Mixed	3.6	11983.8	1.6	5326.1
ARDSA	Arterial	C&G	6	19973.0	1.9	6324.8
	Residential	C&G	3	9986.5	2.9	9653.6
CBERRRSA	Residential	OC	0.1	332.9	0.3	998.6
		C&G	0.7	2330.2	0.3	998.6
		Mixed	0.2	665.8	0.2	665.8

There is some variability within operator and sweep frequency categories from year to year, but overall, the unit load values suggest a fairly consistent range of dirt loading over the past three years.

4.3. Sweeping Effectiveness Assessment for 2013

Sweeping effectiveness can be related to potential for receiving water impact by a number of relationships illustrated by this data and other data presented in this report. The spatial relationship of street drainage to receiving waters and to the total sediment load present on those streets is an important factor. Performance records summarized in Section 3.1 along with operation maps included in Section 5 provide insight to the potential for street sediment loads to washoff into Anchorage storm drains and receiving waters based on these spatial relationships. Of the three reporting MS4 operators, ARDSA sweeps the most street miles at 618 miles (about 577 miles of residential streets and 41 miles of arterial streets), with CBERRRSA second at 199 street miles (all residential), and ADOT&PF third with about 176 street miles (91 miles arterial and 85 miles residential). Distribution of these contributing surfaces varies even more significantly between the operators. ADOT&PF and CBERRRSA streets are spread across large geographic areas. For ADOT&PF jurisdiction, streets extend across the entire Municipality and most of its watersheds. Despite its relatively small streets inventory, CBERRRSA's operational areas also cross a large number of watersheds. However ARDSA's operational area, although including the largest street inventory, is significantly more compact, with the result that ARDSA streets drain across a much smaller number of watersheds than either of the other two primary Anchorage MS4 operators.

Overall, sweeping efficiencies are high for the spring sweep period. These high efficiencies are believed to be due to the high sediment loadings on the street surfaces. This is particularly notable for the spring sweeps when initial loads are the highest, representing traction sanding loads accumulated over the entire winter. As a result spring sweeping efficiencies historically exceed 90 percent. The results of 2013 residual sampling reflected a removal rate of approximately 95% for arterial streets and 70% for residential streets for the 2013 spring sweep period.

Sweeping efficiencies for later events are somewhat reduced but include sweeping removal rates that still reflect relatively large sediment loads varying from approximately 5,700 to 26,000 pounds per pick up mile for arterial streets and 2,000 to 20,000 pounds per pick up mile for residential/collector streets for the 2013 summer and fall sweeps. This shows a slightly higher range of variability in sediment loads than in 2012. CBERRRSA streets tend to have the lightest concentration of sediment on them, producing unit load numbers that are lower than those of ARDSA and ADOT&PF for almost all sweep frequency categories and sweep periods. This may be due to differences in the street patterns of the areas maintained by these two street maintenance groups. The primary residential area served by CBERRRSA lies in a relatively flat, newer subdivision area served by lollipop and looped streets linked by a single collector, with adjacent yards having few trees. As a result fewer intersections are present and the need for winter sanding may be significantly reduced. On the other hand, ARDSA and ADOT&PF serve much older and highly urbanized Anchorage areas where streets are laid out on a grid block basis, requiring many more collectors and a larger number of controlled intersections where more sanding may be needed to maintain safe winter trafficking.

Anchorage MS4 Street Sweeping Report for 2013

These older neighborhoods are also well-treed, which may lead to the higher fall street particulate load observed.

Both swept dirt loads and residual dirt loads remaining on street surfaces after sweeping are higher than national norms, and potential reasons for this are currently being investigated. Swept dirt loads are expected to be higher than national norms due to the amount of winter traction sanding employed by the different MS4 operators due to the nature of Anchorage's wintertime climate. However, reported load numbers may be biased high due to inaccurate measurement techniques for determining volume of sediment from typically wet slurries delivered by the street sweepers. Hypothesis for high post sweep dirt loads include overemphasis on full width sweeping, not enough sweeping passes, overwatering when sweeping, road conditions including weathered road surfaces and uneven gutter pans, track out from unpaved areas, and unrestricted parking on streets during sweeping operations. For more information regarding dirt loading and street sweeping performance please see WMS document WMP Apr14001, "Anchorage Street Sweeping and Storm Water Controls: 2013 Performance Evaluation" (Appendix E-2 of the 2013 APDES report). These issues will continue to be addressed in upcoming assessments in 2014.

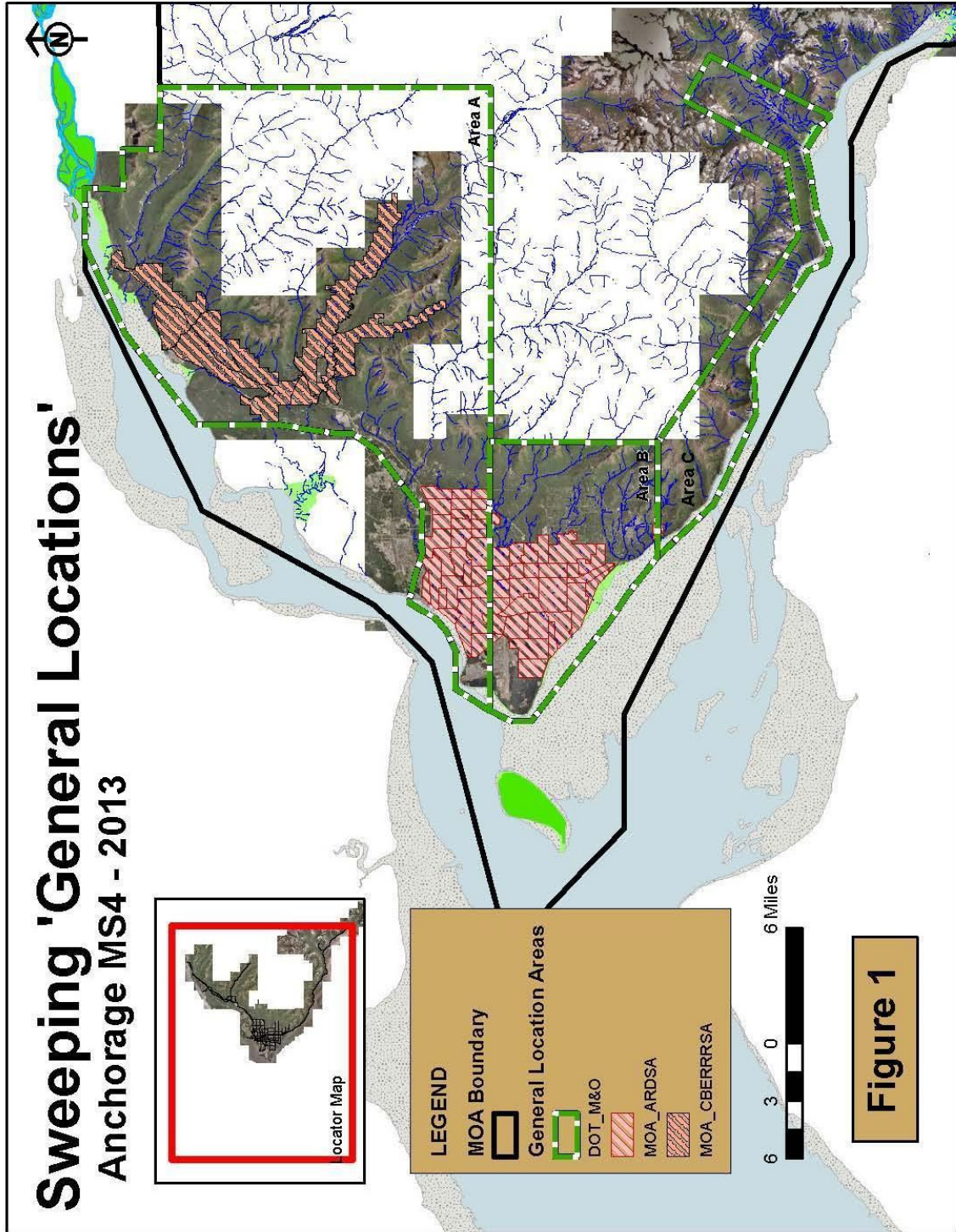
5. 2013 Maps and Data Tables

Section 5 contains maps and detailed data tables supporting summary information and the sweeping assessment presented in Section 2 through 4 above. Section 5.1 contains maps of swept streets and operational areas. Section 5.2 contains detailed sweeping performance records for each of the Anchorage MS4 operators.

5.1. *Designated Streets and General Location Maps*

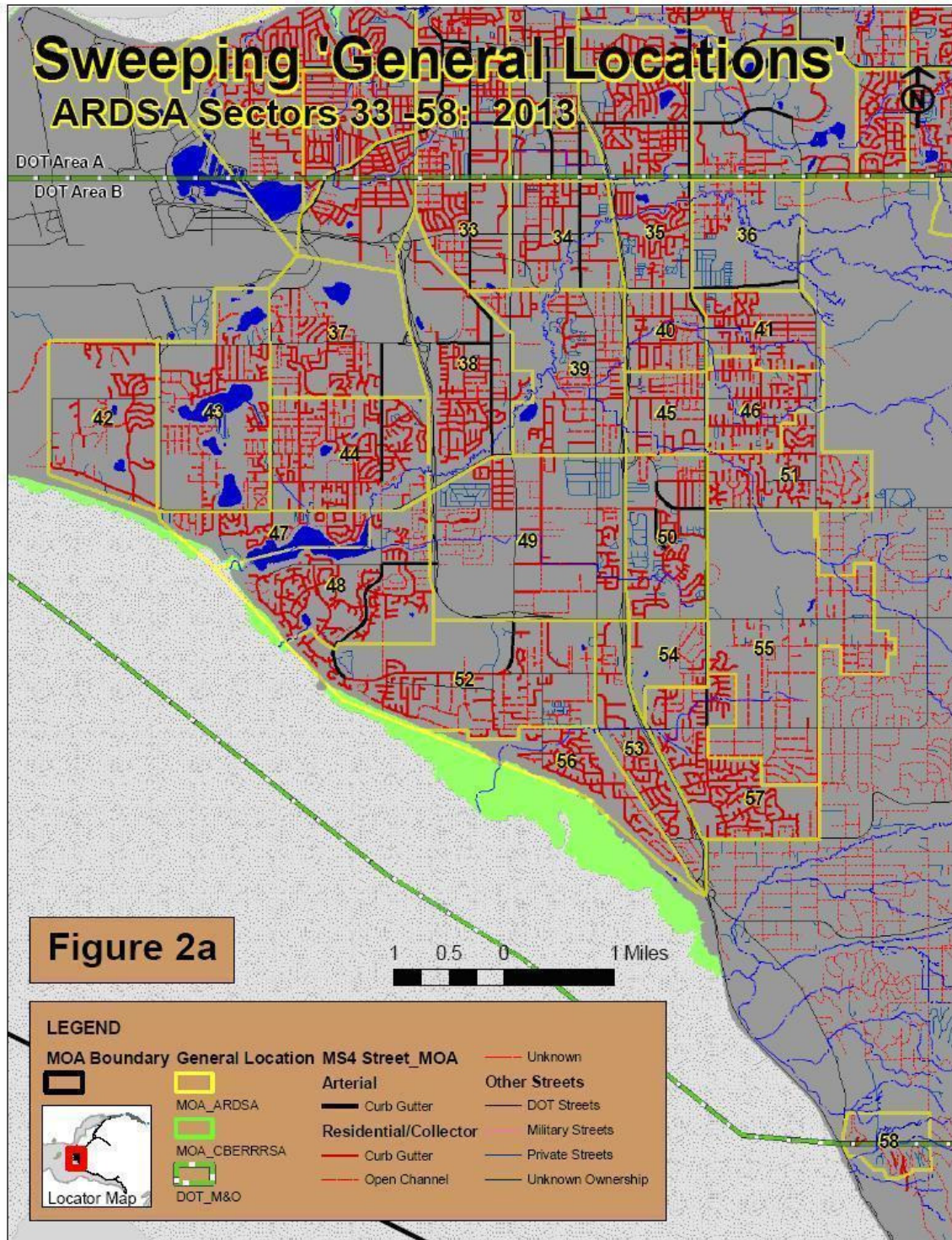
This section contains maps of Anchorage MS4 streets designated for sweeping by each of the principle street maintenance operators listed in Section 2.0. The maps also locate sweeping operational areas ('general locations') that each operator has used to structure compilation and reporting of 2013 sweeping performance records. The first map in this section, Figure 5-1, provides an overview of all operational areas for all operators. More detailed maps of individual operator's areas and designated streets are presented in the following figures.

Figure 5-1 Anchorage MS4 Sweeping 'General Locations'



Anchorage MS4 Street Sweeping Report for 2013

Figure 5-2 MOA_ARDSA, South—2013 Designated Swept Streets



Anchorage MS4 Street Sweeping Report for 2013

Figure 5-3 MOA_ARDSA, North—2013 Designated Swept Streets

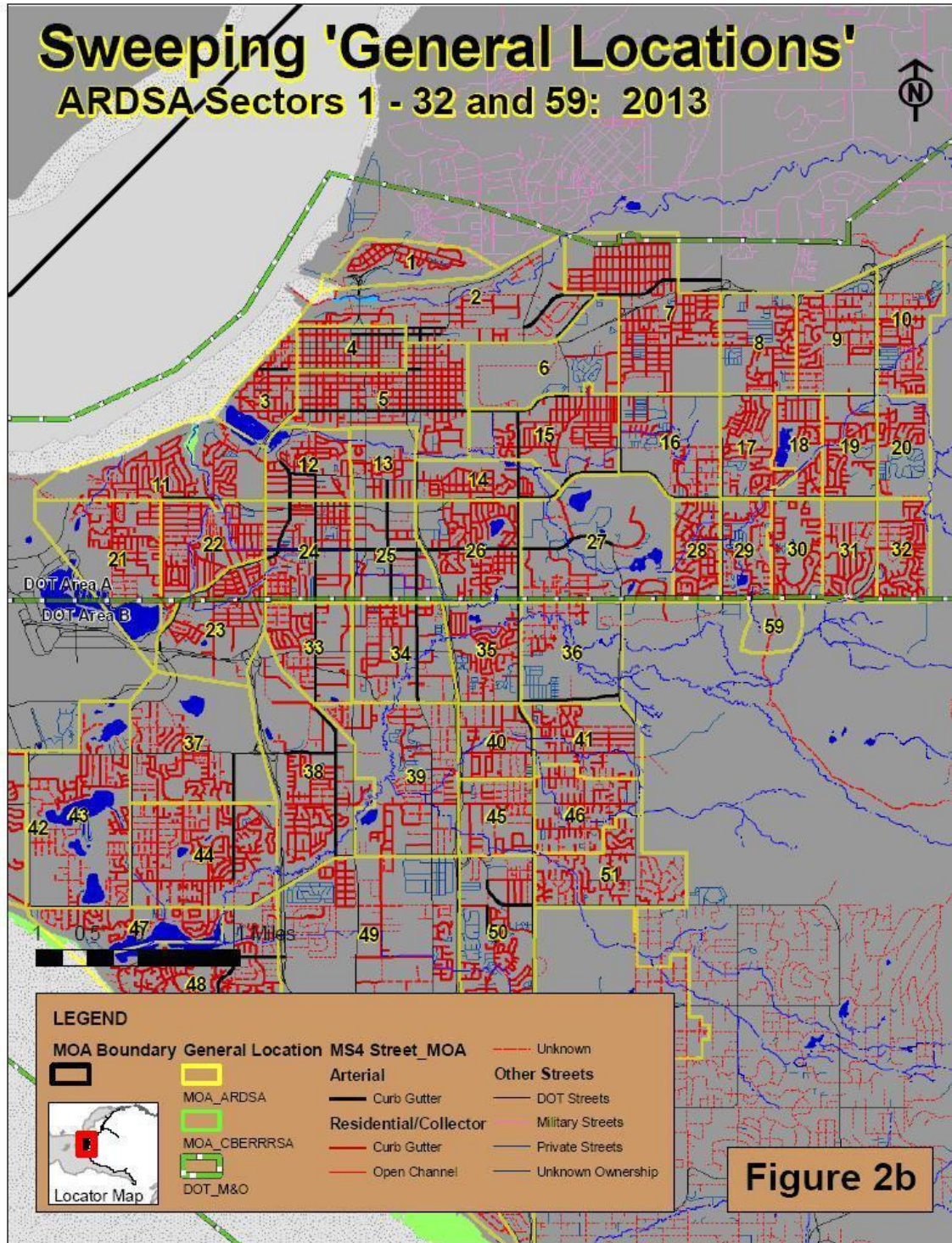
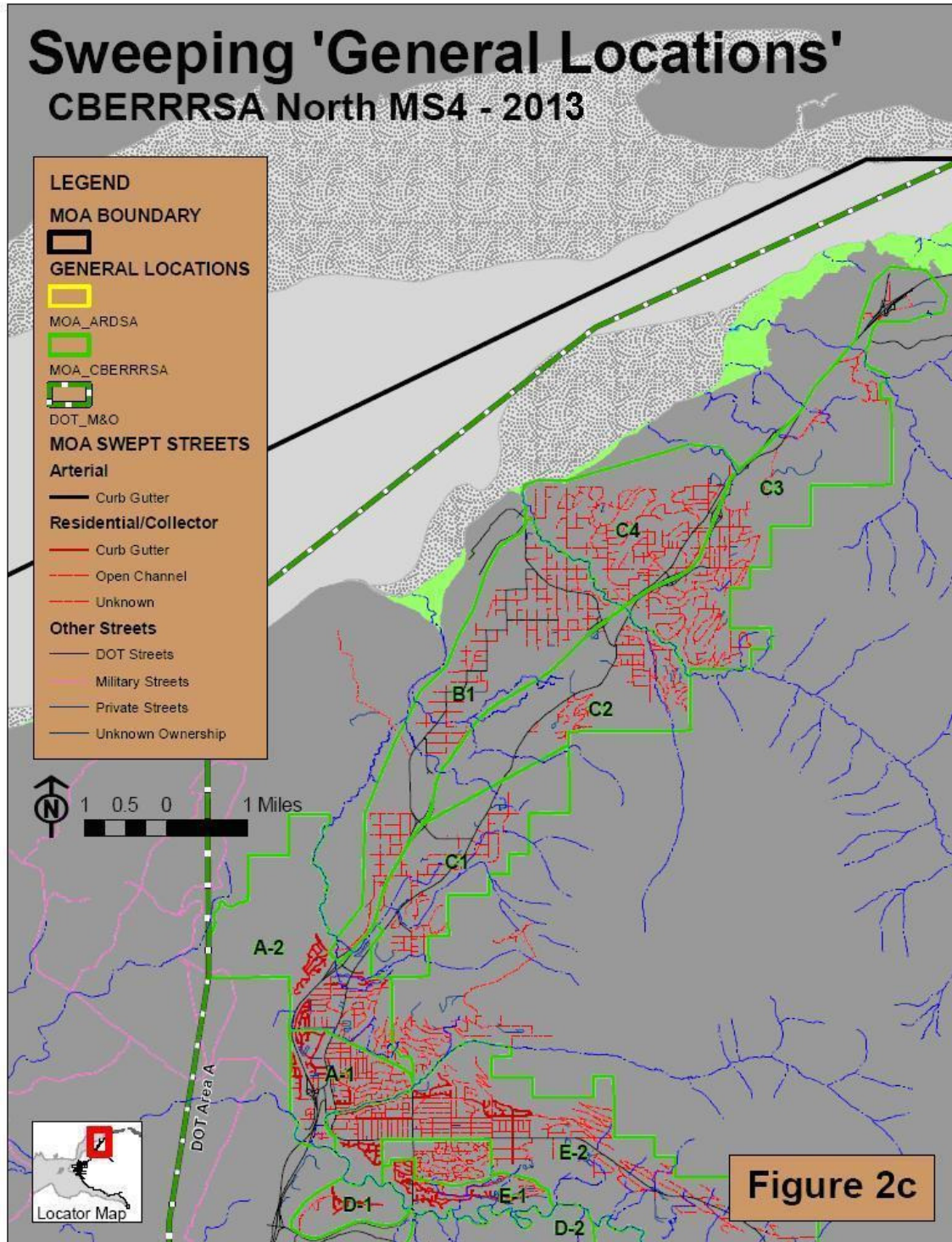
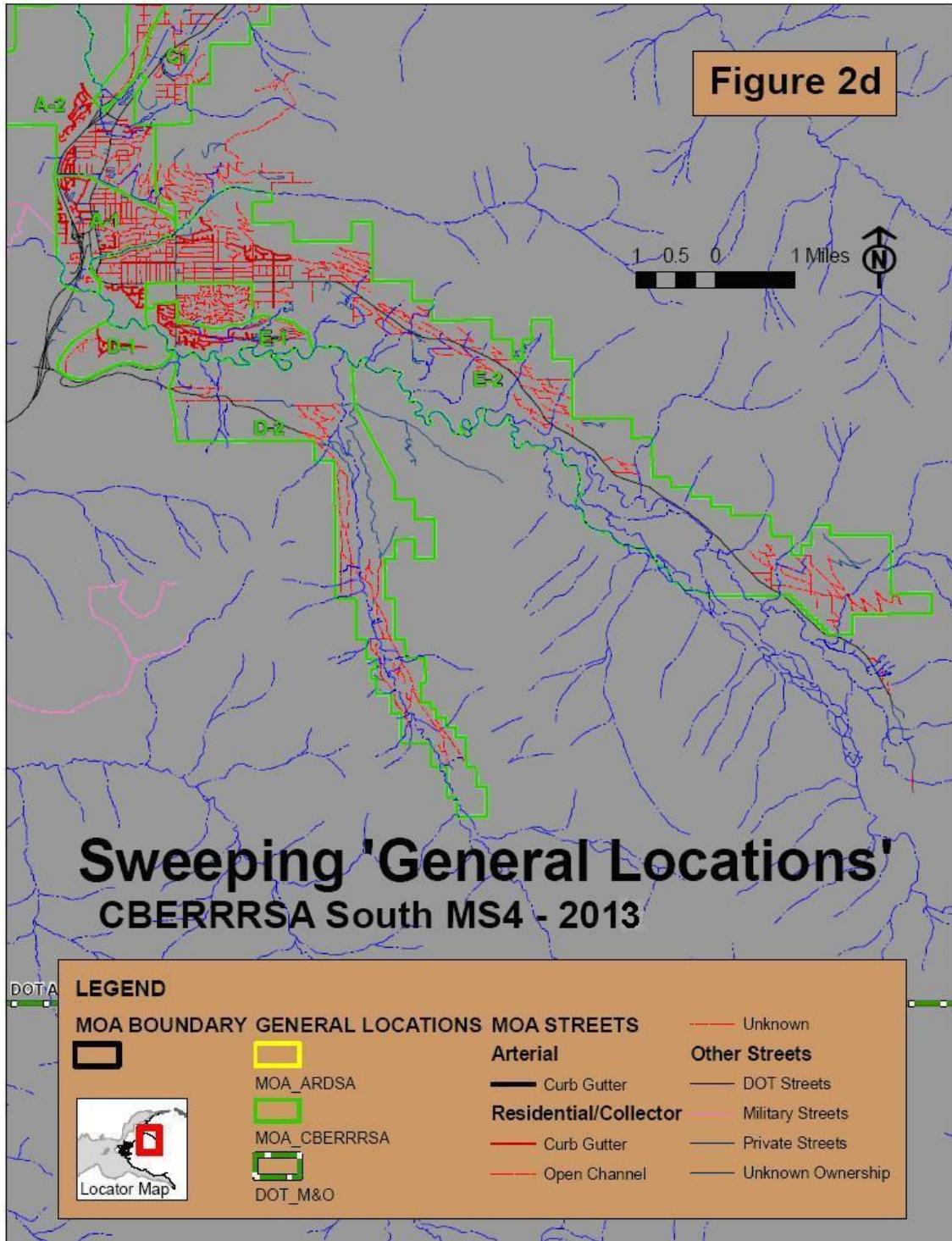


Figure 5-4 CBERRRSA, North—2013 Designated Swept Streets



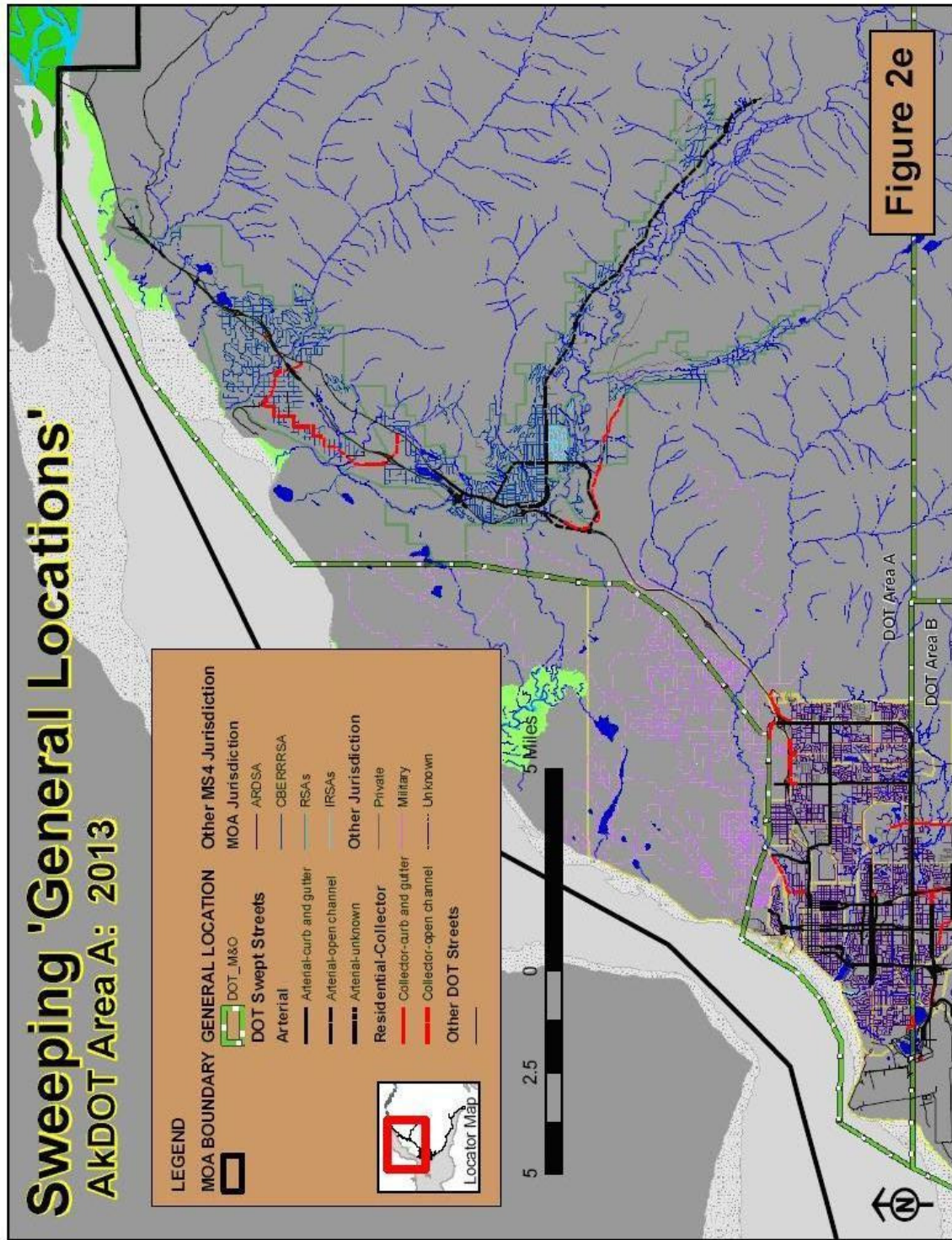
Anchorage MS4 Street Sweeping Report for 2013

Figure 5-5 CBERRRSA South—2013 Designated Swept Streets



Anchorage MS4 Street Sweeping Report for 2013

Figure 5-6 ADOT&PF Area A—2013 Designated Swept Streets



Anchorage MS4 Street Sweeping Report for 2013

Figure 5-7 ADOT&PF Area B—2013 Designated Swept Streets

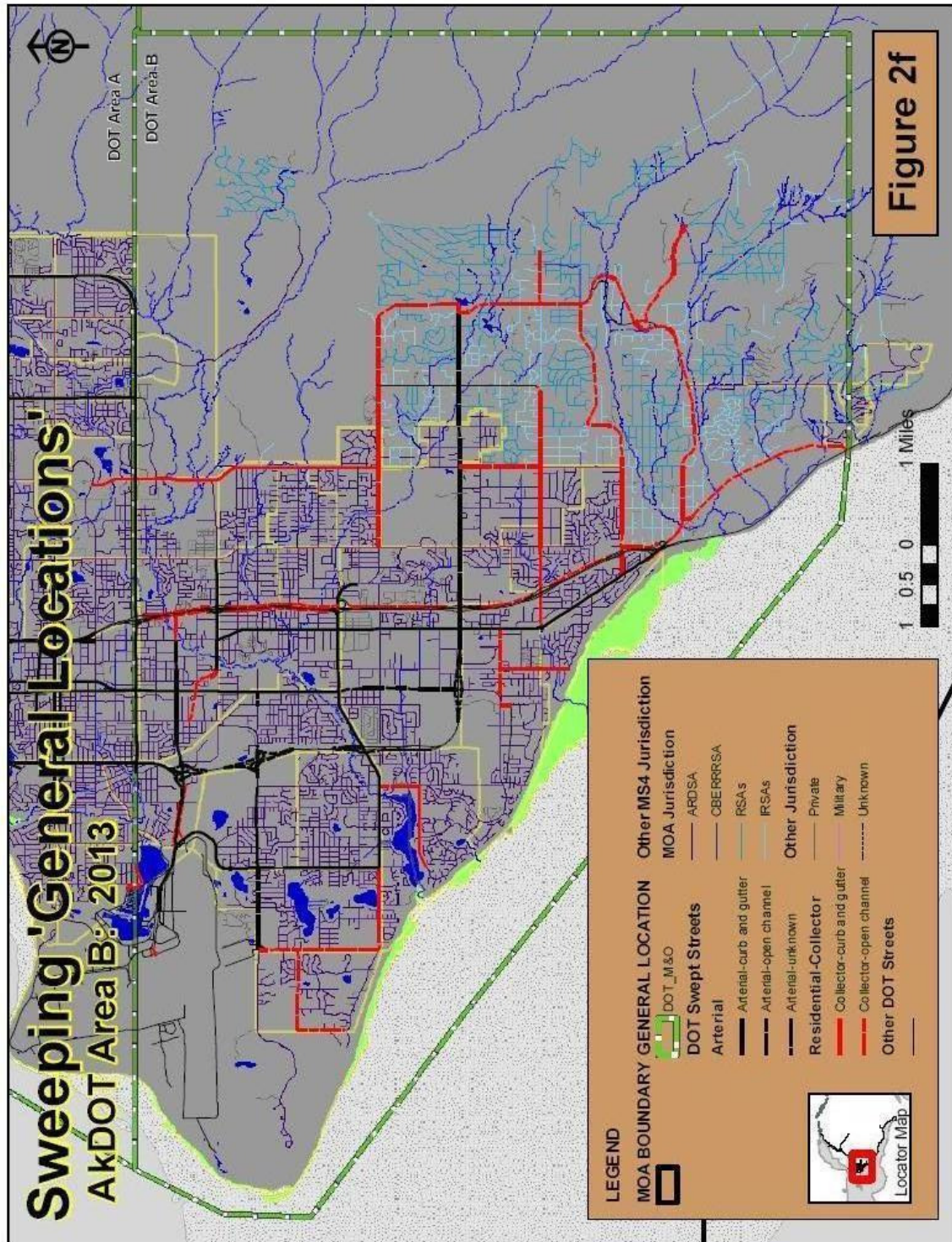
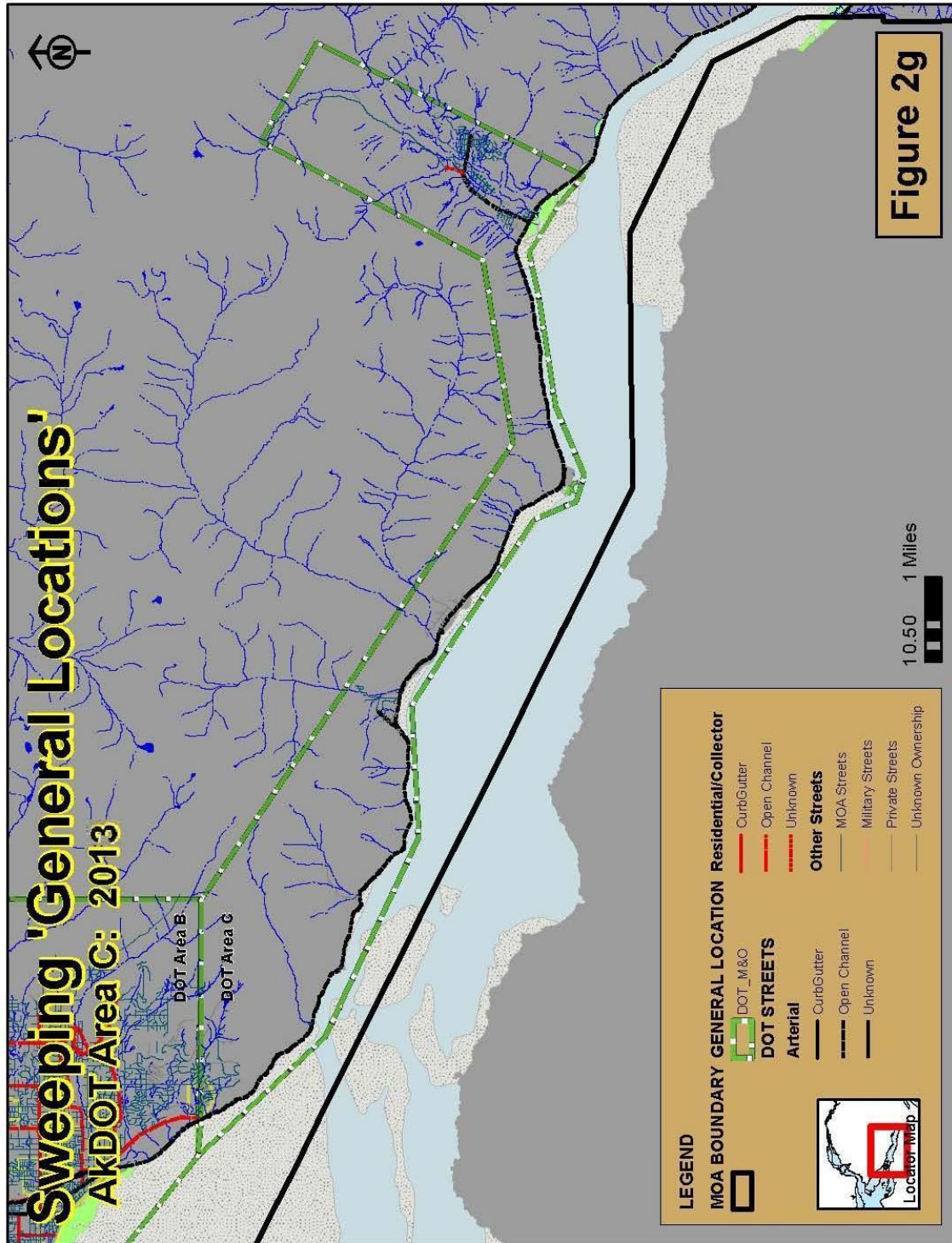


Figure 5-8 ADOT&PF Area C—2013 Designated Swept Streets



Anchorage MS4 Street Sweeping Report for 2013

5.2. Anchorage MS4 Detailed Sweeping Records for 2013

Section 5.2 contains detailed sweeping records for 2013 for each of the principle Anchorage MS4 maintenance agencies. Records for each agency are summarized in a separate subsection, with records organized first by sweeping event and then by the operational areas ('general locations') of that operator.

Anchorage MS4 Street Sweeping Report for 2013

5.2.1. ADOT&PF 2013 Detailed Sweeping Reports

Table 5-1 ADOT&PF Spring 2013 Sweeping Report

2013 Spring ADOT&PF							
Completion Range: 5/8/2013 - 6/10/2013							
Area A	EPA Category	Drainage	Street_Miles	Pickup Miles	Total Pick up (Cubic Yards)	Unit Pick up (cyds/PU Mile)	Completeness (%)
	Arterial	OC	2.7	5.4	92.0	16.9	100
		CG	29.6	69.1	2418.0	35.0	100
		Mixed	14.2	43.2	1266.0	29.3	100
	Residential	OC	22.0	43.9	482.0	11.0	100
		CG	1.1	3.4	116.0	34.5	100
		Mixed	11.2	23.0	274.0	11.9	100
Totals			80.9	188.0	4648.0		100
Area B	EPA Category	Drainage	Street_Miles	Pickup Miles	Total Pick up (Cubic Yards)	Unit Pick up (cyds/PU Mile)	Completeness (%)
	Arterial	OC	2.6	5.3	36.0	6.8	100
		CG	9.4	33.4	1277.0	38.2	100
		Mixed	29.0	74.9	1963.0	26.2	100
	Residential	OC	30.3	60.7	172.0	2.8	100
		CG	3.0	8.6	104.0	12.1	100
		Mixed	17.2	36.0	233.0	6.5	100
Totals			91.4	218.9	3785.0		100
Area C	EPA Category	Drainage	Street_Miles	Pickup Miles	Total Pick up (Cubic Yards)	Unit Pick up (cyds/PU Mile)	Completeness (%)
	Arterial	OC	2.9	0.0	0.0	0.0	100
Totals			2.9	0.0	0.0		100

Due to a late spring snowfall, sweeping did not start until early May.

Anchorage MS4 Street Sweeping Report for 2013

Table 5-2 ADOT&PF Summer 2013 Sweeping Report

2013 Summer ADOT&PF							
Completion Range: 6/15/2013 - 7/12/2013							
Area A	EPA Category	Drainage	Street_Miles	Pickup Miles	Total Pick up (Cubic Yards)	Unit Pick up (cyds/PU Mile)	Completeness (%)
	Arterial	OC	2.7	5.4	28.0	5.2	100
		CG	29.6	69.1	364.0	5.3	100
		Mixed	14.2	43.2	218.0	5.1	100
	Residential	OC	22.0	43.9	210.0	4.8	100
		CG	1.1	3.4	16.0	4.8	100
		Mixed	11.2	23.0	138.0	6.0	100
Totals			80.9	188.0	974.0		100
Area B	EPA Category	Drainage	Street_Miles	Pickup Miles	Total Pick up (Cubic Yards)	Unit Pick up (cyds/PU Mile)	Completeness (%)
	Arterial	OC	2.6	5.3	1.0	0.2	100
		CG	9.4	33.4	101.0	3.0	100
		Mixed	29.0	74.9	364.0	4.9	100
	Residential	OC	30.3	60.7	80.0	1.3	100
		CG	3.0	8.6	47.0	5.5	100
		Mixed	17.2	36.0	107.0	3.0	100
Totals			91.4	218.9	700.0		100
Area C	EPA Category	Drainage	Street_Miles	Pickup Miles	Total Pick up (Cubic Yards)	Unit Pick up (cyds/PU Mile)	Completeness (%)
	Arterial*	OC	2.9	0.0	0.0	0.0	100
Totals			2.9	0.0	0.0		100

Anchorage MS4 Street Sweeping Report for 2013

Table 5-3 ADOT&PF Fall 2013 Sweeping Report

2013 Fall ADOT&PF							
Completion Range: 9/1/2013 - 10/14/2013							
Area A	EPA Category	Drainage	Street_Miles	Pickup Miles	Total Pick up (Cubic Yards)	Unit Pick up (cyds/PU Mile)	Completeness (%)
	Arterial	OC	2.7	5.4	24.0	4.4	100
		CG	29.6	69.1	540.0	7.8	100
		Mixed	14.2	43.2	236.0	5.5	100
	Residential	OC	22.0	43.9	286.0	6.5	100
		CG	1.1	3.4	36.0	10.7	100
		Mixed	11.2	23.0	170.0	7.4	100
Totals			80.9	188.0	1292.0		100
Area B	EPA Category	Drainage	Street_Miles	Pickup Miles	Total Pick up (Cubic Yards)	Unit Pick up (cyds/PU Mile)	Completeness (%)
	Arterial	OC	2.6	5.3	13.0	2.5	100
		CG	9.4	33.4	266.0	8.0	100
		Mixed	29.0	74.9	476.0	6.4	100
	Residential	OC	30.3	60.7	61.0	1.0	100
		CG	3.0	8.6	37.0	4.3	100
		Mixed	17.2	36.0	85.0	2.4	100
Totals			91.4	218.9	938.0		100
Area C	EPA Category	Drainage	Street_Miles	Pickup Miles	Total Pick up (Cubic Yards)	Unit Pick up (cyds/PU Mile)	Completeness (%)
	Arterial	OC	2.9	0.0	0.0	0.0	100
Totals			2.9	0.0	0.0		100

Anchorage MS4 Street Sweeping Report for 2013

5.2.2. CBERRRSA 2013 Detailed Sweeping Reports

Table 5-4 CBERRRSA Spring 2013 Sweeping Report

2013 Spring CBERRRSA							
Completion Range 5/1/2013 - 6/3/2013							
Area A	EPA Category*	Drainage	Street Miles	Pickup Miles	Total Pick up (Cubic Yards)	Unit Pick up (Cubic Yds /Mile)	Completeness (%)
	Residential	OC	21.2	37.9	150.0	4.0	100.0
		CG	12.0	24.0	309.0	12.9	100.0
		Mixed	4.1	8.2	24.0	2.9	100.0
Totals			37.3	70.0	483.0		100.0
Area B	EPA Category	Drainage	Street Miles	Pickup Miles	Total Pick up (Cubic Yards)	Unit Pick up (Cubic Yds /Mile)	Completeness (%)
	Residential	OC	18.3	0.0			100.0
		CG	0.1	0.2	3.0	12.5	100.0
	Totals			18.4	0.2	3.0	
Area C	EPA Category	Drainage	Street Miles	Pickup Miles	Total Pick up (Cubic Yards)	Unit Pick up (Cubic Yds /Mile)	Completeness (%)
	Residential	OC	64.9	34.2	123.0	3.6	100.0
		CG	0.0	0.0	0.0		100.0
		Mixed	1.4	2.9	9.0	3.1	100.0
Totals			66.3	37.1	132.0		100.0
Area D	EPA Category	Drainage	Street Miles	Pickup Miles	Total Pick up (Cubic Yards)	Unit Pick up (Cubic Yds /Mile)	Completeness (%)
	Residential	OC	17.8	0.0			100.0
		CG	1.7	3.4	3.0	0.9	100.0
	Totals			19.5	3.4	3.0	
Area E	EPA Category	Drainage	Street Miles	Pickup Miles	Total Pick up (Cubic Yards)	Unit Pick up (Cubic Yds /Mile)	Completeness (%)
	Residential	OC	31.9	5.5	36.0	6.5	100.0
		CG	16.2	32.4	231.0	7.1	100.0
		Mixed	9.0	18.1	24.0	1.3	100.0
Totals			57.2	56.0	291.0		100.0

*Note: CBERRRSA Operational area Contains no Arterial Street Segments

Anchorage MS4 Street Sweeping Report for 2013

Table 5-5 CBERRRSA Summer 2013 Sweeping Report

2013 Summer CBERRRSA							
Completion Range 6/15/2013 - 8/1/2013							
Area A	EPA Category*	Drainage	Street Miles	Pickup Miles	Total Pick up (Cubic Yards)	Unit Pick up (Cubic Yds /Mile)	Completeness (%)
	Residential	OC	21.2	37.9	Swept as needed		
		CG	12.0	24.0	Swept as needed		
		Mixed	4.1	8.2	Swept as needed		
Totals			37.3	70.0	*no data reported		
Area B	EPA Category	Drainage	Street Miles	Pickup Miles	Total Pick up (Cubic Yards)	Unit Pick up (Cubic Yds /Mile)	Completeness (%)
	Residential	OC	18.3	0.0	Swept as needed		
		CG	0.1	0.2	Swept as needed		
Totals			18.4	0.2	*no data reported		
Area C	EPA Category	Drainage	Street Miles	Pickup Miles	Total Pick up (Cubic Yards)	Unit Pick up (Cubic Yds /Mile)	Completeness (%)
	Residential	OC	64.9	34.2	Swept as needed		
		CG	0.0	0.0	Swept as needed		
		Mixed	1.4	2.9	Swept as needed		
Totals			66.3	37.1	*no data reported		
Area D	EPA Category	Drainage	Street Miles	Pickup Miles	Total Pick up (Cubic Yards)	Unit Pick up (Cubic Yds /Mile)	Completeness (%)
	Residential	OC	17.8	0.0	Swept as needed		
		CG	1.7	3.4	Swept as needed		
Totals			19.5	3.4	*no data reported		
Area E	EPA Category	Drainage	Street Miles	Pickup Miles	Total Pick up (Cubic Yards)	Unit Pick up (Cubic Yds /Mile)	Completeness (%)
	Residential	OC	31.9	5.5	Swept as needed		
		CG	16.2	32.4	Swept as needed		
		Mixed	9.0	18.1	Swept as needed		
Totals			57.2	56.0	*no data reported		

*Note: CBERRRSA Operational area Contains no Arterial Street Segments

*For the 2013 summer sweep period CBERRRSA reported that roads were swept ‘as needed’ (as per the Street Sweeping Management Plan) and did not report any volumes of swept materials. This suggests that only open channel type roads swept with kick broom type sweepers were swept in the summer period.

Anchorage MS4 Street Sweeping Report for 2013

Table 5-6 CBERRRSA Fall 2013 Sweeping Report

2013 Fall CBERRRSA							
Completion Range 9/9/2013 - 9/25/2013							
Area A	EPA Category*	Drainage	Street Miles	Pickup Miles	Total Pick up (Cubic Yards)	Unit Pick up (Cubic Yds /Mile)	Completeness (%)
	Residential	OC	9.8	15.2	18.0	1.2	100.0
		CG	4.6	9.2	18.0	2.0	100.0
		Mixed	21.6	43.1	39.0	0.9	100.0
Totals			36.0	67.4	75.0		100.0
Area B	EPA Category	Drainage	Street Miles	Pickup Miles	Total Pick up (Cubic Yards)	Unit Pick up (Cubic Yds /Mile)	Completeness (%)
	Residential	OC	18.4	0.0			100.0
		CG	0.3	0.6	6.0	10.0	100.0
	Totals			18.7	0.6	6.0	
Area C	EPA Category	Drainage	Street Miles	Pickup Miles	Total Pick up (Cubic Yards)	Unit Pick up (Cubic Yds /Mile)	Completeness (%)
	Residential	OC	54.2	14.1	6.0	0.4	100.0
		CG	0.0	0.0			
		Mixed	11.8	24.0	12.0	0.5	100.0
Totals			66.0	38.1	18.0		100.0
Area D	EPA Category	Drainage	Street Miles	Pickup Miles	Total Pick up (Cubic Yards)	Unit Pick up (Cubic Yds /Mile)	Completeness (%)
	Residential	OC	17.8	0.0			100.0
		CG	1.7	3.4	0.0	0.0	100.0
	Totals			19.5	3.4	0.0	
Area E	EPA Category	Drainage	Street Miles	Pickup Miles	Total Pick up (Cubic Yards)	Unit Pick up (Cubic Yds /Mile)	Completeness (%)
	Residential	OC	30.1	1.8	3.0	1.7	100.0
		CG	2.3	4.6	3.0	0.6	100.0
		Mixed	20.2	40.4	12.0	0.3	100.0
Totals			52.6	46.8	18.0		100.0
Area A&E Mixed	EPA Category	Drainage	Street Miles	Pickup Miles	Total Pick up (Cubic Yards)	Unit Pick up (Cubic Yds /Mile)	Completeness (%)
	Residential	Mixed	6.1	12.2	6.0	0.5	100.0
	Totals			6.1	12.2	6.0	

*Note: CBERRRSA Operational area Contains no Arterial Street Segments

Anchorage MS4 Street Sweeping Report for 2013

5.2.3. ARDSA 2013 Detailed Sweeping Reports

Table 5-7 ARDSA Spring 2013 Sweeping Report

2013 Spring ARDSA

Completion Range 4/18/2013 - 5/13/2013

Sector 1	EPA Category	Drainage	Street Miles	Pickup Miles	Total Pick up (Cubic Yards)	Unit Pick up (Cubic Yds/Mile)	Completeness (%)
	Residential	OC					
		CG		10.68			
		Mixed			132		100
Totals					132		100

Sector 2	EPA Category	Drainage	Street Miles	Pickup Miles	Total Pick up (Cubic Yards)	Unit Pick up (Cubic Yds/Mile)	Completeness (%)
	Arterial	OC		0.00			
		CG		7.01	176.13	25.13	100
	Residential	OC					
		CG		10.49			
		Mixed			343.75		100
Totals					519.88		100

Sector 3	EPA Category	Drainage	Street Miles	Pickup Miles	Total Pick up (Cubic Yards)	Unit Pick up (Cubic Yds/Mile)	Completeness (%)
	Arterial	OC		0.00			
		CG		0.56	No data reported		0
	Residential	OC					
		CG		13.44			
		Mixed			252.5		100
Totals					252.5		

Sector 4	EPA Category	Drainage	Street Miles	Pickup Miles	Total Pick up (Cubic Yards)	Unit Pick up (Cubic Yds/Mile)	Completeness (%)
	Arterial	OC		0.00			
		CG		8.57	450	52.51	100
	Residential	OC					
		CG		12.89			
		Mixed			20		100
Totals					470		100

Sector 5	EPA Category	Drainage	Street Miles	Pickup Miles	Total Pick up (Cubic Yards)	Unit Pick up (Cubic Yds/Mile)	Completeness (%)
	Arterial	OC		0.00			
		CG		6.59	117.88	17.88	100
	Residential	OC					
		CG		34.24			
		Mixed			701.26		100
Totals					819.14		100

Sector 6	EPA Category	Drainage	Street Miles	Pickup Miles	Total Pick up (Cubic Yards)	Unit Pick up (Cubic Yds/Mile)	Completeness (%)
	Arterial	OC		0.00			
		CG		0.00			
	Residential	OC					
		CG		3.03			
		Mixed			82.48		100
Totals					82.48		100

Sector 7	EPA Category	Drainage	Street Miles	Pickup Miles	Total Pick up (Cubic Yards)	Unit Pick up (Cubic Yds/Mile)	Completeness (%)
	Arterial	OC		0.00			
		CG		1.95	154.63	79.14	100
	Residential	OC					
		CG		46.35			
		Mixed			529.39		100
Totals					684.02		100

Anchorage MS4 Street Sweeping Report for 2013

Sector 8	EPA Category	Drainage	Street Miles	Pickup Miles	Total Pick up (Cubic Yards)	Unit Pick up (Cubic Yds/Mile)	Completeness (%)
	Arterial	OC		0.00			
		CG		0.00			
	Residential	OC					
		CG		12.13			
		Mixed			157.43		100
Totals					157.43		100

Sector 9	EPA Category	Drainage	Street Miles	Pickup Miles	Total Pick up (Cubic Yards)	Unit Pick up (Cubic Yds/Mile)	Completeness (%)
	Arterial	OC		0.00			
		CG		0.00			
	Residential	OC					
		CG		12.04			
		Mixed			335.2		100
Totals					335.2		100

Sector 10	EPA Category	Drainage	Street Miles	Pickup Miles	Total Pick up (Cubic Yards)	Unit Pick up (Cubic Yds/Mile)	Completeness (%)
	Arterial	OC		0.00			
		CG		0.00			
	Residential	OC					
		CG		11.19			
		Mixed			149		100
Totals					149		100

Sector 11	EPA Category	Drainage	Street Miles	Pickup Miles	Total Pick up (Cubic Yards)	Unit Pick up (Cubic Yds/Mile)	Completeness (%)
	Arterial	OC					
		CG		1.16			
		Mixed				171.13	100
	Residential	OC					
		CG		20.57			
		Mixed			191.75		100
Totals					362.88		100

Sector 12	EPA Category	Drainage	Street Miles	Pickup Miles	Total Pick up (Cubic Yards)	Unit Pick up (Cubic Yds/Mile)	Completeness (%)
	Arterial	OC		0.00			
		CG		2.38	58.13	24.44	100
	Residential	OC					
		CG		14.06			
		Mixed			198.58		100
Totals					256.71		100

Sector 13	EPA Category	Drainage	Street Miles	Pickup Miles	Total Pick up (Cubic Yards)	Unit Pick up (Cubic Yds/Mile)	Completeness (%)
	Arterial	OC		0.00			
		CG		0.36	15.38	42.49	100
	Residential	OC					
		CG		5.84			
		Mixed			34.25		100
Totals					49.63		100

Sector 14	EPA Category	Drainage	Street Miles	Pickup Miles	Total Pick up (Cubic Yards)	Unit Pick up (Cubic Yds/Mile)	Completeness (%)
	Arterial	OC		0.00			
		CG		3.53	124.3	35.21	100
	Residential	OC		0.00			
		CG		11.91	174.21	14.63	100
Totals				15.44	298.51	19.33	100

Sector 15	EPA Category	Drainage	Street Miles	Pickup Miles	Total Pick up (Cubic Yards)	Unit Pick up (Cubic Yds/Mile)	Completeness (%)
	Arterial	OC		0.00			
		CG		6.22	220.93	35.53	100
	Residential	OC		0.00			
		CG		23.57	234.5	9.95	100
Totals				29.79	455.43	15.29	100

Anchorage MS4 Street Sweeping Report for 2013

Sector 16	EPA Category	Drainage	Street Miles	Pickup Miles	Total Pick up (Cubic Yards)	Unit Pick up (Cubic Yds/Mile)	Completeness (%)
	Arterial	OC		0.00			
		CG		7.08	127.63	18.03	100
	Residential	OC					
		CG		8.23			
		Mixed			180.45		100
Totals					308.08		100

Sector 17	EPA Category	Drainage	Street Miles	Pickup Miles	Total Pick up (Cubic Yards)	Unit Pick up (Cubic Yds/Mile)	Completeness (%)
	Arterial	OC		0.00			
		CG		1.53	82.63	54.01	100
	Residential	OC					
		CG		15.49			
		Mixed			119.5		100
Totals					202.13		100

Sector 18	EPA Category	Drainage	Street Miles	Pickup Miles	Total Pick up (Cubic Yards)	Unit Pick up (Cubic Yds/Mile)	Completeness (%)
	Arterial	OC		0.00			
		CG		2.00	44.75	22.38	100
	Residential	OC		0.00			
		CG		12.33	138.69	11.25	100
Totals				14.33	183.44	12.80	100

Sector 19	EPA Category	Drainage	Street Miles	Pickup Miles	Total Pick up (Cubic Yards)	Unit Pick up (Cubic Yds/Mile)	Completeness (%)
	Arterial	OC		0.00			
		CG		2.00	62.75	31.38	100
	Residential	OC		0.00			
		CG		12.09	237.03	19.61	100
Totals				14.09	299.78	21.28	100

Sector 20	EPA Category	Drainage	Street Miles	Pickup Miles	Total Pick up (Cubic Yards)	Unit Pick up (Cubic Yds/Mile)	Completeness (%)
	Arterial	OC		0.00			
		CG		0.00			
	Residential	OC					
		CG		7.41			
		Mixed			122.88		100
Totals					122.88		100

Sector 21	EPA Category	Drainage	Street Miles	Pickup Miles	Total Pick up (Cubic Yards)	Unit Pick up (Cubic Yds/Mile)	Completeness (%)
	Arterial	OC		0.00			
		CG		0.00			
	Residential	OC					
		CG		18.57			
		Mixed			177.35		100
Totals					177.35		100

Sector 22	EPA Category	Drainage	Street Miles	Pickup Miles	Total Pick up (Cubic Yards)	Unit Pick up (Cubic Yds/Mile)	Completeness (%)
	Arterial	OC		0.00			
		CG		0.00			
	Residential	OC					
		CG		24.77			
		Mixed			234.95		100
Totals					234.95		100

Sector 23	EPA Category	Drainage	Street Miles	Pickup Miles	Total Pick up (Cubic Yards)	Unit Pick up (Cubic Yds/Mile)	Completeness (%)
	Arterial	OC		0.00			
		CG		3.91	80.25	20.50	100
	Residential	OC					
		CG		17.67			
		Mixed			187.65		100
Totals					267.9		100

Anchorage MS4 Street Sweeping Report for 2013

Sector 24	EPA Category	Drainage	Street Miles	Pickup Miles	Total Pick up (Cubic Yards)	Unit Pick up (Cubic Yds/Mile)	Completeness (%)
	Arterial	OC		0.00			
		CG		7.53	120.63	16.03	100
	Residential	OC					
		CG		16.95			
		Mixed			257.35		100
Totals					377.98		100

Sector 25	EPA Category	Drainage	Street Miles	Pickup Miles	Total Pick up (Cubic Yards)	Unit Pick up (Cubic Yds/Mile)	Completeness (%)
	Arterial	OC		0.00			
		CG		5.37	150.75	28.07	100
	Residential	OC		0.00			
		CG		5.23	84.91	16.24	100
Totals				10.60	235.66	22.23	100

Sector 26	EPA Category	Drainage	Street Miles	Pickup Miles	Total Pick up (Cubic Yards)	Unit Pick up (Cubic Yds/Mile)	Completeness (%)
	Arterial	OC		0.00			
		CG		8.01	77.58	9.69	100
	Residential	OC					
		CG		24.29			
		Mixed			182.95		100
Totals					260.53		100

Sector 27	EPA Category	Drainage	Street Miles	Pickup Miles	Total Pick up (Cubic Yards)	Unit Pick up (Cubic Yds/Mile)	Completeness (%)
	Arterial	OC		0.00			
		CG		4.10	175.13	42.71	100
	Residential	OC					
		CG		4.83			
		Mixed			202.92		100
Totals					378.05		100

Sector 28	EPA Category	Drainage	Street Miles	Pickup Miles	Total Pick up (Cubic Yards)	Unit Pick up (Cubic Yds/Mile)	Completeness (%)
	Arterial	OC		0.00			
		CG		0.00			
	Residential	OC					
		CG		16.26			
		Mixed			124.5		100
Totals					124.5		100

Sector 29	EPA Category	Drainage	Street Miles	Pickup Miles	Total Pick up (Cubic Yards)	Unit Pick up (Cubic Yds/Mile)	Completeness (%)
	Arterial	OC		0.00			
		CG		0.00			
	Residential	OC					
		CG		10.25			
		Mixed			98		100
Totals					98		100

Sector 30	EPA Category	Drainage	Street Miles	Pickup Miles	Total Pick up (Cubic Yards)	Unit Pick up (Cubic Yds/Mile)	Completeness (%)
	Arterial	OC		0.00			
		CG		0.00			
	Residential	OC		0.00			
		CG		12.89	175.13	13.59	100
Totals				12.89	175.13	13.59	100

Sector 31	EPA Category	Drainage	Street Miles	Pickup Miles	Total Pick up (Cubic Yards)	Unit Pick up (Cubic Yds/Mile)	Completeness (%)
	Arterial	OC		0.00			
		CG		0.00			
	Residential	OC					
		CG		9.92			
		Mixed			58.51		100
Totals					58.51		100

Anchorage MS4 Street Sweeping Report for 2013

Sector 32	EPA Category	Drainage	Street Miles	Pickup Miles	Total Pick up (Cubic Yards)	Unit Pick up (Cubic Yds/Mile)	Completeness (%)
	Arterial	OC		0.00			
		CG		0.00			
	Residential	OC					
		CG		13.78			
		Mixed			118.88		100
Totals					118.88		100

Sector 33	EPA Category	Drainage	Street Miles	Pickup Miles	Total Pick up (Cubic Yards)	Unit Pick up (Cubic Yds/Mile)	Completeness (%)
	Arterial	OC		0.00			
		CG		3.44	54.38	15.81	100
	Residential	OC					
		CG		10.79			
		Mixed			28.5		100
Totals					82.88		100

Sector 34	EPA Category	Drainage	Street Miles	Pickup Miles	Total Pick up (Cubic Yards)	Unit Pick up (Cubic Yds/Mile)	Completeness (%)
	Arterial	OC		0.00			
		CG		4.98	97.5	19.57	100
	Residential	OC					
		CG		13.09			
		Mixed			200.75		100
Totals					298.25		100

Sector 35	EPA Category	Drainage	Street Miles	Pickup Miles	Total Pick up (Cubic Yards)	Unit Pick up (Cubic Yds/Mile)	Completeness (%)
	Arterial	OC		0.00			
		CG		4.00	104	26.00	100
	Residential	OC					
		CG		12.82			
		Mixed			92		100
Totals					196		100

Sector 36	EPA Category	Drainage	Street Miles	Pickup Miles	Total Pick up (Cubic Yards)	Unit Pick up (Cubic Yds/Mile)	Completeness (%)
	Arterial	OC		0.00			
		CG		3.90	84.63	21.70	100
	Residential	OC					
		CG		3.30			
		Mixed			47.5		100
Totals					132.13		100

Sector 37	EPA Category	Drainage	Street Miles	Pickup Miles	Total Pick up (Cubic Yards)	Unit Pick up (Cubic Yds/Mile)	Completeness (%)
	Arterial	OC		0.00			
		CG		0.99	61.95	62.58	100
	Residential	OC					
		CG		16.07			
		Mixed			No data reported		0
Totals					61.95		

Sector 38	EPA Category	Drainage	Street Miles	Pickup Miles	Total Pick up (Cubic Yards)	Unit Pick up (Cubic Yds/Mile)	Completeness (%)
	Arterial	OC		0.00			
		CG		3.79	75.38	19.89	100
	Residential	OC					
		CG		21.37			
		Mixed			245.5		100
Totals					320.88		100

Sector 39	EPA Category	Drainage	Street Miles	Pickup Miles	Total Pick up (Cubic Yards)	Unit Pick up (Cubic Yds/Mile)	Completeness (%)
	Arterial	OC		0.00			
		CG		0.00			
	Residential	OC					
		CG		12.82			
		Mixed			329.49		100
Totals					329.49		100

Anchorage MS4 Street Sweeping Report for 2013

Sector 40	EPA Category	Drainage	Street Miles	Pickup Miles	Total Pick up (Cubic Yards)	Unit Pick up (Cubic Yds/Mile)	Completeness (%)
	Arterial	OC		0.00			
		CG		3.00	80.38	26.79	100
	Residential	OC					
		CG		10.06			
		Mixed			131.9		100
Totals					212.28		100

Sector 41	EPA Category	Drainage	Street Miles	Pickup Miles	Total Pick up (Cubic Yards)	Unit Pick up (Cubic Yds/Mile)	Completeness (%)
	Arterial	OC		0.00			
		CG		0.00			
	Residential	OC					
		CG		15.38			
		Mixed			60.65		100
Totals					60.65		100

Sector 42	EPA Category	Drainage	Street Miles	Pickup Miles	Total Pick up (Cubic Yards)	Unit Pick up (Cubic Yds/Mile)	Completeness (%)
	Arterial	OC		0.00			
		CG		0.00			
	Residential	OC					
		CG		13.15			
		Mixed			75.88		100
Totals					75.88		100

Sector 43	EPA Category	Drainage	Street Miles	Pickup Miles	Total Pick up (Cubic Yards)	Unit Pick up (Cubic Yds/Mile)	Completeness (%)
	Arterial	OC		0.00			
		CG		0.00			
	Residential	OC					
		CG		12.82			
		Mixed			No data reported		0
Totals					0		0

Sector 44	EPA Category	Drainage	Street Miles	Pickup Miles	Total Pick up (Cubic Yards)	Unit Pick up (Cubic Yds/Mile)	Completeness (%)
	Arterial	OC		0.00			
		CG		1.41	32.25	22.94	100
	Residential	OC					
		CG		27.28			
		Mixed			95.23		100
Totals					127.48		100

Sector 45	EPA Category	Drainage	Street Miles	Pickup Miles	Total Pick up (Cubic Yards)	Unit Pick up (Cubic Yds/Mile)	Completeness (%)
	Arterial	OC		0.00			
		CG		3.00	68.63	22.88	100
	Residential	OC					
		CG		6.67			
		Mixed			150.9		100
Totals					219.53		100

Sector 46	EPA Category	Drainage	Street Miles	Pickup Miles	Total Pick up (Cubic Yards)	Unit Pick up (Cubic Yds/Mile)	Completeness (%)
	Arterial	OC		0.00			
		CG		0.00			
	Residential	OC					
		CG		15.33			
		Mixed			174.4		100
Totals					174.4		100

Sector 47	EPA Category	Drainage	Street Miles	Pickup Miles	Total Pick up (Cubic Yards)	Unit Pick up (Cubic Yds/Mile)	Completeness (%)
	Arterial	OC		0.00			
		CG		0.00			
	Residential	OC					
		CG		12.89			
		Mixed			No data reported		0
Totals					0		0

Anchorage MS4 Street Sweeping Report for 2013

Sector 48	EPA Category	Drainage	Street Miles	Pickup Miles	Total Pick up (Cubic Yards)	Unit Pick up (Cubic Yds/Mile)	Completeness (%)
	Arterial	OC		0.00			
		CG		5.11	163.06	31.92	100
	Residential	OC					
		CG		30.45			
		Mixed			40.38		100
Totals					203.44		100

Sector 49	EPA Category	Drainage	Street Miles	Pickup Miles	Total Pick up (Cubic Yards)	Unit Pick up (Cubic Yds/Mile)	Completeness (%)
	Arterial	OC		0.00			
		CG		0.00			
	Residential	OC					
		CG		14.91			
		Mixed			158.7		100
Totals					158.7		100

Sector 50	EPA Category	Drainage	Street Miles	Pickup Miles	Total Pick up (Cubic Yards)	Unit Pick up (Cubic Yds/Mile)	Completeness (%)
	Arterial	OC		0.00			
		CG		12.47	170.88	13.70	100
	Residential	OC					
		CG		17.10			
		Mixed			181.53		100
Totals					352.41		100

Sector 51	EPA Category	Drainage	Street Miles	Pickup Miles	Total Pick up (Cubic Yards)	Unit Pick up (Cubic Yds/Mile)	Completeness (%)
	Arterial	OC		0.00			
		CG		0.00			
	Residential	OC					
		CG		14.71			
		Mixed			59.28		100
Totals					59.28		100

Sector 52	EPA Category	Drainage	Street Miles	Pickup Miles	Total Pick up (Cubic Yards)	Unit Pick up (Cubic Yds/Mile)	Completeness (%)
	Arterial	OC		0.00			
		CG		1.85	221.69	119.70	100
	Residential	OC					
		CG		20.26			
		Mixed			51.35		100
Totals					273.04		100

Sector 53	EPA Category	Drainage	Street Miles	Pickup Miles	Total Pick up (Cubic Yards)	Unit Pick up (Cubic Yds/Mile)	Completeness (%)
	Arterial	OC		0.00			
		CG		0.00			
	Residential	OC					
		CG		12.25			
		Mixed			52		100
Totals					52		100

Sector 54	EPA Category	Drainage	Street Miles	Pickup Miles	Total Pick up (Cubic Yards)	Unit Pick up (Cubic Yds/Mile)	Completeness (%)
	Arterial	OC		0.00			
		CG		2.50	50.25	20.10	100
	Residential	OC					
		CG		0.74			
		Mixed			No data reported		0
Totals					50.25		

Sector 55	EPA Category	Drainage	Street Miles	Pickup Miles	Total Pick up (Cubic Yards)	Unit Pick up (Cubic Yds/Mile)	Completeness (%)
	Arterial	OC		0.00			
		CG		0.00			
	Residential	OC					
		CG		2.32			
		Mixed			30.25		100
Totals					30.25		100

Anchorage MS4 Street Sweeping Report for 2013

Sector 56	EPA Category	Drainage	Street Miles	Pickup Miles	Total Pick up (Cubic Yards)	Unit Pick up (Cubic Yds/Mile)	Completeness (%)
	Arterial	OC		0.00			
		CG		0.00			
	Residential	OC					
		CG		14.21			
		Mixed			No data reported		0
Totals					0		

Sector 57	EPA Category	Drainage	Street Miles	Pickup Miles	Total Pick up (Cubic Yards)	Unit Pick up (Cubic Yds/Mile)	Completeness (%)
	Arterial	OC		0.00			
		CG		1.48	46.38	31.34	100
	Residential	OC					
		CG		32.15			
		Mixed			109.75		100
Totals					156.13		100

Sector 58	EPA Category	Drainage	Street Miles	Pickup Miles	Total Pick up (Cubic Yards)	Unit Pick up (Cubic Yds/Mile)	Completeness (%)
	Arterial	OC		0.00			
		CG		0.00			
	Residential	OC		0.00			
		CG		1.32	250.5	189.77	100
Totals				1.32	250.5	189.77	100

Sector 59	EPA Category	Drainage	Street Miles	Pickup Miles	Total Pick up (Cubic Yards)	Unit Pick up (Cubic Yds/Mile)	Completeness (%)
	Arterial	OC		0.00			
		CG		0.00			
		Mixed			25.38		
	Residential	OC			24.25		100
		CG		0.00			
		Mixed					
Totals					49.63		100

Sector 60	EPA Category	Drainage	Street Miles	Pickup Miles	Total Pick up (Cubic Yards)	Unit Pick up (Cubic Yds/Mile)	Completeness (%)
	Arterial	OC					
		CG					
		Mixed			266		100
Totals					266		100

Anchorage MS4 Street Sweeping Report for 2013

Table 5-8 ARDSA Summer 2013 Sweeping Report

2013 Summer ARDSA

Completion Range 6/2/2013 - 7/18/2013

Sector 1	EPA Category	Drainage	Street Miles	Pickup Miles	Total Pick up (Cubic Yards)	Unit Pick up (Cubic Yds/Mile)	Completeness (%)
	Residential	OC					
		CG		10.68			
		Mixed			34		
Totals					34		

Sector 2	EPA Category	Drainage	Street Miles	Pickup Miles	Total Pick up (Cubic Yards)	Unit Pick up (Cubic Yds/Mile)	Completeness (%)
	Arterial	OC		0.00			
		CG		7.01	49.36	7.04	100
	Residential	OC					
		CG		10.49			
		Mixed			No data reported		0
Totals					49.36		

Sector 3	EPA Category	Drainage	Street Miles	Pickup Miles	Total Pick up (Cubic Yards)	Unit Pick up (Cubic Yds/Mile)	Completeness (%)
	Arterial	OC		0.00			
		CG		0.56	No data reported		0
	Residential	OC					
		CG		13.44			
		Mixed			No data reported		0
Totals					0		0

Sector 4	EPA Category	Drainage	Street Miles	Pickup Miles	Total Pick up (Cubic Yards)	Unit Pick up (Cubic Yds/Mile)	Completeness (%)
	Arterial	OC		0.00			
		CG		8.57	No data reported		0
	Residential	OC					
		CG		12.89			
		Mixed			111.15		
Totals					111.15		

Sector 5	EPA Category	Drainage	Street Miles	Pickup Miles	Total Pick up (Cubic Yards)	Unit Pick up (Cubic Yds/Mile)	Completeness (%)
	Arterial	OC		0.00			
		CG		6.59	20.11	3.05	100
	Residential	OC					
		CG		34.24			
		Mixed			36.25		
Totals					56.36		

Sector 6	EPA Category	Drainage	Street Miles	Pickup Miles	Total Pick up (Cubic Yards)	Unit Pick up (Cubic Yds/Mile)	Completeness (%)
	Arterial	OC		0.00			
		CG		0.00			
	Residential	OC					
		CG		3.03			
		Mixed			25.45		
Totals					25.45		

Sector 7	EPA Category	Drainage	Street Miles	Pickup Miles	Total Pick up (Cubic Yards)	Unit Pick up (Cubic Yds/Mile)	Completeness (%)
	Arterial	OC		0.00			
		CG		1.95	25	12.79	100
	Residential	OC					
		CG		46.35			
		Mixed			23.72		
Totals					48.72		

Anchorage MS4 Street Sweeping Report for 2013

Sector 8	EPA Category	Drainage	Street Miles	Pickup Miles	Total Pick up (Cubic Yards)	Unit Pick up (Cubic Yds/Mile)	Completeness (%)
	Arterial	OC		0.00			
		CG		0.00			
	Residential	OC					
		CG		12.13			
		Mixed			6.63		
Totals					6.63		

Sector 9	EPA Category	Drainage	Street Miles	Pickup Miles	Total Pick up (Cubic Yards)	Unit Pick up (Cubic Yds/Mile)	Completeness (%)
	Arterial	OC		0.00			
		CG		0.00			
		Mixed			0.97		
	Residential	OC					
		CG		12.04			
		Mixed			20.47		
Totals					21.44		

Sector 10	EPA Category	Drainage	Street Miles	Pickup Miles	Total Pick up (Cubic Yards)	Unit Pick up (Cubic Yds/Mile)	Completeness (%)
	Arterial	OC		0.00			
		CG		0.00			
	Residential	OC					
		CG		11.19			
		Mixed			No data reported		0
Totals					0		0

Sector 11	EPA Category	Drainage	Street Miles	Pickup Miles	Total Pick up (Cubic Yards)	Unit Pick up (Cubic Yds/Mile)	Completeness (%)
	Arterial	OC					
		CG		1.16			
		Mixed			27.63		100
	Residential	OC					
		CG		20.57			
		Mixed			4.3		
Totals					31.93		

Sector 12	EPA Category	Drainage	Street Miles	Pickup Miles	Total Pick up (Cubic Yards)	Unit Pick up (Cubic Yds/Mile)	Completeness (%)
	Arterial	OC		0.00			
		CG		2.38	18.91	7.95	100
	Residential	OC					
		CG		14.06			
		Mixed			12.3		
Totals					31.21		

Sector 13	EPA Category	Drainage	Street Miles	Pickup Miles	Total Pick up (Cubic Yards)	Unit Pick up (Cubic Yds/Mile)	Completeness (%)
	Arterial	OC		0.00			
		CG		0.36	5.06	13.98	100
	Residential	OC					
		CG		5.84			
		Mixed			No data reported		0
Totals					5.06		

Sector 14	EPA Category	Drainage	Street Miles	Pickup Miles	Total Pick up (Cubic Yards)	Unit Pick up (Cubic Yds/Mile)	Completeness (%)
	Arterial	OC		0.00			
		CG		3.53	11.63	3.29	100
	Residential	OC		0.00			
		CG		11.91			
		Mixed			6.03		
Totals				15.44	11.63		

Sector 15	EPA Category	Drainage	Street Miles	Pickup Miles	Total Pick up (Cubic Yards)	Unit Pick up (Cubic Yds/Mile)	Completeness (%)
	Arterial	OC		0.00			
		CG		6.22	29.86	4.80	100
	Residential	OC		0.00			
		CG		23.57	1.56		
Totals				29.79	31.42		

Anchorage MS4 Street Sweeping Report for 2013

Sector 16	EPA Category	Drainage	Street Miles	Pickup Miles	Total Pick up (Cubic Yards)	Unit Pick up (Cubic Yds/Mile)	Completeness (%)
	Arterial	OC		0.00			
		CG		7.08	24.69	3.49	100
	Residential	OC					
		CG		8.23			
		Mixed			9.25		
Totals					33.94		

Sector 17	EPA Category	Drainage	Street Miles	Pickup Miles	Total Pick up (Cubic Yards)	Unit Pick up (Cubic Yds/Mile)	Completeness (%)
	Arterial	OC		0.00			
		CG		1.53	7.69	5.03	100
	Residential	OC					
		CG		15.49			
		Mixed			No data reported		0
Totals					7.69		

Sector 18	EPA Category	Drainage	Street Miles	Pickup Miles	Total Pick up (Cubic Yards)	Unit Pick up (Cubic Yds/Mile)	Completeness (%)
	Arterial	OC		0.00			
		CG		2.00	8.81	4.41	100
	Residential	OC		0.00			
		CG		12.33	7.28		
Totals				14.33	16.09		

Sector 19	EPA Category	Drainage	Street Miles	Pickup Miles	Total Pick up (Cubic Yards)	Unit Pick up (Cubic Yds/Mile)	Completeness (%)
	Arterial	OC		0.00			
		CG		2.00	8.81	4.41	100
	Residential	OC		0.00			
		CG		12.09	12.25		
Totals				14.09	21.06		

Sector 20	EPA Category	Drainage	Street Miles	Pickup Miles	Total Pick up (Cubic Yards)	Unit Pick up (Cubic Yds/Mile)	Completeness (%)
	Arterial	OC		0.00			
		CG		0.00			
	Residential	OC					
		CG		7.41			
		Mixed			No data reported		0
Totals					0		0

Sector 21	EPA Category	Drainage	Street Miles	Pickup Miles	Total Pick up (Cubic Yards)	Unit Pick up (Cubic Yds/Mile)	Completeness (%)
	Arterial	OC		0.00			
		CG		0.00			
	Residential	OC					
		CG		18.57			
		Mixed			15.25		
Totals					15.25		

Sector 22	EPA Category	Drainage	Street Miles	Pickup Miles	Total Pick up (Cubic Yards)	Unit Pick up (Cubic Yds/Mile)	Completeness (%)
	Arterial	OC		0.00			
		CG		0.00			
	Residential	OC					
		CG		24.77			
		Mixed			7.63		
Totals					7.63		

Sector 23	EPA Category	Drainage	Street Miles	Pickup Miles	Total Pick up (Cubic Yards)	Unit Pick up (Cubic Yds/Mile)	Completeness (%)
	Arterial	OC		0.00			
		CG		3.91	15.75	4.02	100
	Residential	OC					
		CG		17.67			
		Mixed			9.13		
Totals					24.88		

Anchorage MS4 Street Sweeping Report for 2013

Sector 24	EPA Category	Drainage	Street Miles	Pickup Miles	Total Pick up (Cubic Yards)	Unit Pick up (Cubic Yds/Mile)	Completeness (%)
	Arterial	OC		0.00			
		CG		7.53	43.09	5.73	100
	Residential	OC					
		CG		16.95			
		Mixed			3.72		
Totals					46.81		

Sector 25	EPA Category	Drainage	Street Miles	Pickup Miles	Total Pick up (Cubic Yards)	Unit Pick up (Cubic Yds/Mile)	Completeness (%)
	Arterial	OC		0.00			
		CG		5.37	49.54	9.22	100
	Residential	OC		0.00			
		CG		5.23	13.24		
Totals				10.60	62.78		

Sector 26	EPA Category	Drainage	Street Miles	Pickup Miles	Total Pick up (Cubic Yards)	Unit Pick up (Cubic Yds/Mile)	Completeness (%)
	Arterial	OC		0.00			
		CG		8.01	20.79	2.60	100
	Residential	OC					
		CG		24.29			
		Mixed			21.66		
Totals					42.45		

Sector 27	EPA Category	Drainage	Street Miles	Pickup Miles	Total Pick up (Cubic Yards)	Unit Pick up (Cubic Yds/Mile)	Completeness (%)
	Arterial	OC		0.00			
		CG		4.10	9.73	2.37	100
	Residential	OC					
		CG		4.83			
		Mixed			39.3		
Totals					49.03		

Sector 28	EPA Category	Drainage	Street Miles	Pickup Miles	Total Pick up (Cubic Yards)	Unit Pick up (Cubic Yds/Mile)	Completeness (%)
	Arterial	OC		0.00			
		CG		0.00			
	Residential	OC					
		CG		16.26			
		Mixed			No data reported		0
Totals					0		0

Sector 29	EPA Category	Drainage	Street Miles	Pickup Miles	Total Pick up (Cubic Yards)	Unit Pick up (Cubic Yds/Mile)	Completeness (%)
	Arterial	OC		0.00			
		CG		0.00			
	Residential	OC					
		CG		10.25			
		Mixed			No data reported		
Totals					0		

Sector 30	EPA Category	Drainage	Street Miles	Pickup Miles	Total Pick up (Cubic Yards)	Unit Pick up (Cubic Yds/Mile)	Completeness (%)
	Arterial	OC		0.00			
		CG		0.00			
	Residential	OC		0.00			
		CG		12.89	11.74		
Totals				12.89	11.74		

Sector 31	EPA Category	Drainage	Street Miles	Pickup Miles	Total Pick up (Cubic Yards)	Unit Pick up (Cubic Yds/Mile)	Completeness (%)
	Arterial	OC		0.00			
		CG		0.00			
	Residential	OC					
		CG		9.92			
		Mixed			4.66		
Totals					4.66		

Anchorage MS4 Street Sweeping Report for 2013

Sector 32	EPA Category	Drainage	Street Miles	Pickup Miles	Total Pick up (Cubic Yards)	Unit Pick up (Cubic Yds/Mile)	Completeness (%)
	Arterial	OC		0.00			
		CG		0.00			
	Residential	OC					
		CG			13.78		
		Mixed			4.67		
Totals					4.67		

Sector 33	EPA Category	Drainage	Street Miles	Pickup Miles	Total Pick up (Cubic Yards)	Unit Pick up (Cubic Yds/Mile)	Completeness (%)
	Arterial	OC		0.00			
		CG		3.44	22.36	6.50	100
	Residential	OC					
		CG			10.79		
		Mixed			No data reported		0
Totals					22.36		

Sector 34	EPA Category	Drainage	Street Miles	Pickup Miles	Total Pick up (Cubic Yards)	Unit Pick up (Cubic Yds/Mile)	Completeness (%)
	Arterial	OC		0.00			
		CG		4.98	11	2.21	100
	Residential	OC					
		CG			13.09		
		Mixed			No data reported		0
Totals					11		

Sector 35	EPA Category	Drainage	Street Miles	Pickup Miles	Total Pick up (Cubic Yards)	Unit Pick up (Cubic Yds/Mile)	Completeness (%)
	Arterial	OC		0.00			
		CG		4.00	3.94	0.99	100
	Residential	OC					
		CG			12.82		
		Mixed			No data reported		0
Totals					3.94		

Sector 36	EPA Category	Drainage	Street Miles	Pickup Miles	Total Pick up (Cubic Yards)	Unit Pick up (Cubic Yds/Mile)	Completeness (%)
	Arterial	OC		0.00			
		CG		3.90	6.5	1.67	100
	Residential	OC					
		CG			3.30		
		Mixed			No data reported		0
Totals					6.5		

Sector 37	EPA Category	Drainage	Street Miles	Pickup Miles	Total Pick up (Cubic Yards)	Unit Pick up (Cubic Yds/Mile)	Completeness (%)
	Arterial	OC		0.00			
		CG		0.99	4.17	4.21	100
	Residential	OC					
		CG			16.07		
		Mixed			109.4		
Totals					113.57		

Sector 38	EPA Category	Drainage	Street Miles	Pickup Miles	Total Pick up (Cubic Yards)	Unit Pick up (Cubic Yds/Mile)	Completeness (%)
	Arterial	OC		0.00			
		CG		3.79	25.16	6.64	100
	Residential	OC					
		CG			21.37		
		Mixed			25		
Totals					50.16		

Sector 39	EPA Category	Drainage	Street Miles	Pickup Miles	Total Pick up (Cubic Yards)	Unit Pick up (Cubic Yds/Mile)	Completeness (%)
	Arterial	OC		0.00			
		CG		0.00			
	Residential	OC					
		CG			12.82		
		Mixed			11.58		
Totals					11.58		

Anchorage MS4 Street Sweeping Report for 2013

Sector 40	EPA Category	Drainage	Street Miles	Pickup Miles	Total Pick up (Cubic Yards)	Unit Pick up (Cubic Yds/Mile)	Completeness (%)
	Arterial	OC		0.00			
		CG		3.00	5.88	1.96	100
	Residential	OC					
		CG		10.06			
		Mixed			8.86		
Totals					14.74		

Sector 41	EPA Category	Drainage	Street Miles	Pickup Miles	Total Pick up (Cubic Yards)	Unit Pick up (Cubic Yds/Mile)	Completeness (%)
	Arterial	OC		0.00			
		CG		0.00			
	Residential	OC					
		CG		15.38			
		Mixed			205.99		
Totals					205.99		

Sector 42	EPA Category	Drainage	Street Miles	Pickup Miles	Total Pick up (Cubic Yards)	Unit Pick up (Cubic Yds/Mile)	Completeness (%)
	Arterial	OC		0.00			
		CG		0.00			
	Residential	OC					
		CG		13.15			
		Mixed			73.41		
Totals					73.41		

Sector 43	EPA Category	Drainage	Street Miles	Pickup Miles	Total Pick up (Cubic Yards)	Unit Pick up (Cubic Yds/Mile)	Completeness (%)
	Arterial	OC		0.00			
		CG		0.00			
	Residential	OC					
		CG		12.82			
		Mixed			280.5		
Totals					280.5		

Sector 44	EPA Category	Drainage	Street Miles	Pickup Miles	Total Pick up (Cubic Yards)	Unit Pick up (Cubic Yds/Mile)	Completeness (%)
	Arterial	OC		0.00			
		CG		1.41	6.05	4.30	100
	Residential	OC					
		CG		27.28			
		Mixed			253.11		
Totals					259.16		

Sector 45	EPA Category	Drainage	Street Miles	Pickup Miles	Total Pick up (Cubic Yards)	Unit Pick up (Cubic Yds/Mile)	Completeness (%)
	Arterial	OC		0.00			
		CG		3.00	5.88	1.96	100
	Residential	OC					
		CG		6.67			
		Mixed			20.66		
Totals					26.54		

Sector 46	EPA Category	Drainage	Street Miles	Pickup Miles	Total Pick up (Cubic Yards)	Unit Pick up (Cubic Yds/Mile)	Completeness (%)
	Arterial	OC		0.00			
		CG		0.00			
	Residential	OC					
		CG		15.33			
		Mixed			126.6		
Totals					126.6		

Sector 47	EPA Category	Drainage	Street Miles	Pickup Miles	Total Pick up (Cubic Yards)	Unit Pick up (Cubic Yds/Mile)	Completeness (%)
	Arterial	OC		0.00			
		CG		0.00			
	Residential	OC					
		CG		12.89			
		Mixed			169		
Totals					169		

Anchorage MS4 Street Sweeping Report for 2013

Sector 48	EPA Category	Drainage	Street Miles	Pickup Miles	Total Pick up (Cubic Yards)	Unit Pick up (Cubic Yds/Mile)	Completeness (%)
	Arterial	OC		0.00			
		CG		5.11	11.02	2.16	100
	Residential	OC					
		CG		30.45			
		Mixed			156.85		
Totals					167.87		

Sector 49	EPA Category	Drainage	Street Miles	Pickup Miles	Total Pick up (Cubic Yards)	Unit Pick up (Cubic Yds/Mile)	Completeness (%)
	Arterial	OC		0.00			
		CG		0.00			
	Residential	OC					
		CG		14.91			
		Mixed			130.15		
Totals					130.15		

Sector 50	EPA Category	Drainage	Street Miles	Pickup Miles	Total Pick up (Cubic Yards)	Unit Pick up (Cubic Yds/Mile)	Completeness (%)
	Arterial	OC		0.00			
		CG		12.47	15.74	1.26	100
	Residential	OC					
		CG		17.10			
		Mixed			11.47		
Totals					27.21		

Sector 51	EPA Category	Drainage	Street Miles	Pickup Miles	Total Pick up (Cubic Yards)	Unit Pick up (Cubic Yds/Mile)	Completeness (%)
	Arterial	OC		0.00			
		CG		0.00			
	Residential	OC					
		CG		14.71			
		Mixed			129.86		
Totals					129.86		

Sector 52	EPA Category	Drainage	Street Miles	Pickup Miles	Total Pick up (Cubic Yards)	Unit Pick up (Cubic Yds/Mile)	Completeness (%)
	Arterial	OC		0.00			
		CG		1.85	10.95	5.91	100
	Residential	OC					
		CG		20.26			
		Mixed			81.73		
Totals					92.68		

Sector 53	EPA Category	Drainage	Street Miles	Pickup Miles	Total Pick up (Cubic Yards)	Unit Pick up (Cubic Yds/Mile)	Completeness (%)
	Arterial	OC		0.00			
		CG		0.00			
	Residential	OC					
		CG		12.25			
		Mixed			111		
Totals					111		

Sector 54	EPA Category	Drainage	Street Miles	Pickup Miles	Total Pick up (Cubic Yards)	Unit Pick up (Cubic Yds/Mile)	Completeness (%)
	Arterial	OC		0.00			
		CG		2.50	5.38	2.15	100
	Residential	OC					
		CG		0.74			
		Mixed			96.5		
Totals					101.88		

Sector 55	EPA Category	Drainage	Street Miles	Pickup Miles	Total Pick up (Cubic Yards)	Unit Pick up (Cubic Yds/Mile)	Completeness (%)
	Arterial	OC		0.00			
		CG		0.00			
	Residential	OC					
		CG		2.32			
		Mixed			185.16		
Totals					185.16		

Anchorage MS4 Street Sweeping Report for 2013

Sector 56	EPA Category	Drainage	Street Miles	Pickup Miles	Total Pick up (Cubic Yards)	Unit Pick up (Cubic Yds/Mile)	Completeness (%)
	Arterial	OC		0.00			
		CG		0.00			
	Residential	OC		14.21			
		Mixed			184		
Totals					184		

Sector 57	EPA Category	Drainage	Street Miles	Pickup Miles	Total Pick up (Cubic Yards)	Unit Pick up (Cubic Yds/Mile)	Completeness (%)
	Arterial	OC		0.00			
		CG		1.48	5.38	3.64	100
	Residential	OC					
		CG		32.15			
		Mixed			187.66		
Totals					193.04		

Sector 58	EPA Category	Drainage	Street Miles	Pickup Miles	Total Pick up (Cubic Yards)	Unit Pick up (Cubic Yds/Mile)	Completeness (%)
	Arterial	OC		0.00			
		CG		0.00			
	Residential	OC		0.00			
		CG		1.32	50.41	38.19	
Totals				1.32	50.41	38.19	

Sector 59	EPA Category	Drainage	Street Miles	Pickup Miles	Total Pick up (Cubic Yards)	Unit Pick up (Cubic Yds/Mile)	Completeness (%)
	Arterial	OC		0.00			
		CG		0.00			
	Residential	OC			15.93		
		CG		0.00			
		Mixed					
Totals					15.93		

Sector 60	EPA Category	Drainage	Street Miles	Pickup Miles	Total Pick up (Cubic Yards)	Unit Pick up (Cubic Yds/Mile)	Completeness (%)
	Arterial	OC					
		CG					
		Mixed			32		100
Totals					32		100

*For the 2013 summer sweep period ARDSA reported sweeping all Arterial and Collector type roads and Residential type roads were swept 'as needed'.

Anchorage MS4 Street Sweeping Report for 2013

Table 5-9 ARDSA Fall 2013 Sweeping Report

2013 Fall ARDSA

Completion Range 8/30/2013 - 9/26/2013

Sector 1	EPA Category	Drainage	Street Miles	Pickup Miles	Total Pick up (Cubic Yards)	Unit Pick up (Cubic Yds/Mile)	Completeness (%)
	Residential	OC					
		CG		10.68			
		Mixed			33		100
Totals					33		100

Sector 2	EPA Category	Drainage	Street Miles	Pickup Miles	Total Pick up (Cubic Yards)	Unit Pick up (Cubic Yds/Mile)	Completeness (%)
	Arterial	OC		0.00			
		CG		7.01	10.48	1.50	100
	Residential	OC					
		CG		10.49			
		Mixed			131		100
Totals					141.48		100

Sector 3	EPA Category	Drainage	Street Miles	Pickup Miles	Total Pick up (Cubic Yards)	Unit Pick up (Cubic Yds/Mile)	Completeness (%)
	Arterial	OC		0.00			
		CG		0.56	1.75	3.11	100
	Residential	OC					
		CG		13.44			
		Mixed			42		100
Totals					43.75		100

Sector 4	EPA Category	Drainage	Street Miles	Pickup Miles	Total Pick up (Cubic Yards)	Unit Pick up (Cubic Yds/Mile)	Completeness (%)
	Arterial	OC		0.00			
		CG		8.57	8.5	0.99	100
	Residential	OC					
		CG		12.89			
		Mixed			35.5		100
Totals					44		100

Sector 5	EPA Category	Drainage	Street Miles	Pickup Miles	Total Pick up (Cubic Yards)	Unit Pick up (Cubic Yds/Mile)	Completeness (%)
	Arterial	OC		0.00			
		CG		6.59	15.32	2.32	100
	Residential	OC					
		CG		34.24			
		Mixed			176.38		100
Totals					191.7		100

Sector 6	EPA Category	Drainage	Street Miles	Pickup Miles	Total Pick up (Cubic Yards)	Unit Pick up (Cubic Yds/Mile)	Completeness (%)
	Arterial	OC		0.00			
		CG		0.00			
	Residential	OC					
		CG		3.03			
		Mixed			16		100
Totals					16		100

Sector 7	EPA Category	Drainage	Street Miles	Pickup Miles	Total Pick up (Cubic Yards)	Unit Pick up (Cubic Yds/Mile)	Completeness (%)
	Arterial	OC		0.00			
		CG		1.95	2.1	1.07	100
	Residential	OC					
		CG		46.35			
		Mixed			68.38		100
Totals					70.48		100

Anchorage MS4 Street Sweeping Report for 2013

Sector 8	EPA Category	Drainage	Street Miles	Pickup Miles	Total Pick up (Cubic Yards)	Unit Pick up (Cubic Yds/Mile)	Completeness (%)
	Arterial	OC		0.00			
		CG		0.00			
	Residential	OC					
		CG		12.13			
		Mixed			25.88		100
Totals					25.88		100

Sector 9	EPA Category	Drainage	Street Miles	Pickup Miles	Total Pick up (Cubic Yards)	Unit Pick up (Cubic Yds/Mile)	Completeness (%)
	Arterial	OC		0.00			
		CG		0.00			
	Residential	OC					
		CG		12.04			
		Mixed			32.38		100
Totals					32.38		100

Sector 10	EPA Category	Drainage	Street Miles	Pickup Miles	Total Pick up (Cubic Yards)	Unit Pick up (Cubic Yds/Mile)	Completeness (%)
	Arterial	OC		0.00			
		CG		0.00			
	Residential	OC					
		CG		11.19			
		Mixed			26.38		100
Totals					26.38		100

Sector 11	EPA Category	Drainage	Street Miles	Pickup Miles	Total Pick up (Cubic Yards)	Unit Pick up (Cubic Yds/Mile)	Completeness (%)
	Arterial	OC					
		CG		1.16			
		Mixed				7.88	100
	Residential	OC					
		CG		20.57			
		Mixed				108	100
Totals					115.88		100

Sector 12	EPA Category	Drainage	Street Miles	Pickup Miles	Total Pick up (Cubic Yards)	Unit Pick up (Cubic Yds/Mile)	Completeness (%)
	Arterial	OC		0.00			
		CG		2.38	14.69	6.18	100
	Residential	OC					
		CG		14.06			
		Mixed			36		100
Totals					50.69		100

Sector 13	EPA Category	Drainage	Street Miles	Pickup Miles	Total Pick up (Cubic Yards)	Unit Pick up (Cubic Yds/Mile)	Completeness (%)
	Arterial	OC		0.00			
		CG		0.36	3.13	8.65	100
	Residential	OC					
		CG		5.84			
		Mixed			17		100
Totals					20.13		100

Sector 14	EPA Category	Drainage	Street Miles	Pickup Miles	Total Pick up (Cubic Yards)	Unit Pick up (Cubic Yds/Mile)	Completeness (%)
	Arterial	OC		0.00			
		CG		3.53	9.95	2.82	100
	Residential	OC		0.00			
		CG		11.91	51	4.28	100
Totals				15.44	60.95	3.95	100

Sector 15	EPA Category	Drainage	Street Miles	Pickup Miles	Total Pick up (Cubic Yards)	Unit Pick up (Cubic Yds/Mile)	Completeness (%)
	Arterial	OC		0.00			
		CG		6.22	18.65	3.00	100
	Residential	OC		0.00			
		CG		23.57	105.5	4.48	100
Totals				29.79	124.15	4.17	100

Anchorage MS4 Street Sweeping Report for 2013

Sector 16	EPA Category	Drainage	Street Miles	Pickup Miles	Total Pick up (Cubic Yards)	Unit Pick up (Cubic Yds/Mile)	Completeness (%)
	Arterial	OC		0.00			
		CG		7.08	7.8	1.10	100
	Residential	OC					
		CG		8.23			
		Mixed			20.38		100
Totals					28.18		100

Sector 17	EPA Category	Drainage	Street Miles	Pickup Miles	Total Pick up (Cubic Yards)	Unit Pick up (Cubic Yds/Mile)	Completeness (%)
	Arterial	OC		0.00			
		CG		1.53	6.25	4.08	100
	Residential	OC					
		CG		15.49			
		Mixed			24		100
Totals					30.25		100

Sector 18	EPA Category	Drainage	Street Miles	Pickup Miles	Total Pick up (Cubic Yards)	Unit Pick up (Cubic Yds/Mile)	Completeness (%)
	Arterial	OC		0.00			
		CG		2.00	5.4	2.70	100
	Residential	OC		0.00			
		CG		12.33	26.38	2.14	100
Totals				14.33	31.78	2.22	100

Sector 19	EPA Category	Drainage	Street Miles	Pickup Miles	Total Pick up (Cubic Yards)	Unit Pick up (Cubic Yds/Mile)	Completeness (%)
	Arterial	OC		0.00			
		CG		2.00	4.73	2.37	100
	Residential	OC		0.00			
		CG		12.09	40.88	3.38	100
Totals				14.09	45.61	3.24	100

Sector 20	EPA Category	Drainage	Street Miles	Pickup Miles	Total Pick up (Cubic Yards)	Unit Pick up (Cubic Yds/Mile)	Completeness (%)
	Arterial	OC		0.00			
		CG		0.00			
	Residential	OC					
		CG		7.41			
		Mixed			18		100
Totals					18		100

Sector 21	EPA Category	Drainage	Street Miles	Pickup Miles	Total Pick up (Cubic Yards)	Unit Pick up (Cubic Yds/Mile)	Completeness (%)
	Arterial	OC		0.00			
		CG		0.00			
	Residential	OC					
		CG		18.57			
		Mixed			72.75		100
Totals					72.75		100

Sector 22	EPA Category	Drainage	Street Miles	Pickup Miles	Total Pick up (Cubic Yards)	Unit Pick up (Cubic Yds/Mile)	Completeness (%)
	Arterial	OC		0.00			
		CG		0.00			
	Residential	OC					
		CG		24.77			
		Mixed			122.25		100
Totals					122.25		100

Sector 23	EPA Category	Drainage	Street Miles	Pickup Miles	Total Pick up (Cubic Yards)	Unit Pick up (Cubic Yds/Mile)	Completeness (%)
	Arterial	OC		0.00			
		CG		3.91	5.5	1.41	100
	Residential	OC					
		CG		17.67			
		Mixed			68.13		100
Totals					73.63		100

Anchorage MS4 Street Sweeping Report for 2013

Sector 24	EPA Category	Drainage	Street Miles	Pickup Miles	Total Pick up (Cubic Yards)	Unit Pick up (Cubic Yds/Mile)	Completeness (%)
	Arterial	OC		0.00			
		CG		7.53	15.13	2.01	100
	Residential	OC					
		CG			16.95		
		Mixed			83.38		100
Totals					98.51		100

Sector 25	EPA Category	Drainage	Street Miles	Pickup Miles	Total Pick up (Cubic Yards)	Unit Pick up (Cubic Yds/Mile)	Completeness (%)
	Arterial	OC		0.00			
		CG			5.37	16.13	3.00
	Residential	OC		0.00			
		CG			5.23	29	5.54
Totals				10.60	45.13	4.26	100

Sector 26	EPA Category	Drainage	Street Miles	Pickup Miles	Total Pick up (Cubic Yards)	Unit Pick up (Cubic Yds/Mile)	Completeness (%)
	Arterial	OC		0.00			
		CG			8.01	3.75	0.47
	Residential	OC					
		CG			24.29		
		Mixed			159.5		100
Totals					163.25		100

Sector 27	EPA Category	Drainage	Street Miles	Pickup Miles	Total Pick up (Cubic Yards)	Unit Pick up (Cubic Yds/Mile)	Completeness (%)
	Arterial	OC		0.00			
		CG			4.10	6.5	1.59
	Residential	OC					
		CG			4.83		
		Mixed			21		100
Totals					27.5		100

Sector 28	EPA Category	Drainage	Street Miles	Pickup Miles	Total Pick up (Cubic Yards)	Unit Pick up (Cubic Yds/Mile)	Completeness (%)
	Arterial	OC		0.00			
		CG			0.00		
	Residential	OC					
		CG			16.26		100
		Mixed			36		
Totals					36		100

Sector 29	EPA Category	Drainage	Street Miles	Pickup Miles	Total Pick up (Cubic Yards)	Unit Pick up (Cubic Yds/Mile)	Completeness (%)
	Arterial	OC		0.00			
		CG			0.00		
	Residential	OC					
		CG			10.25		
		Mixed			30		100
Totals					30		100

Sector 30	EPA Category	Drainage	Street Miles	Pickup Miles	Total Pick up (Cubic Yards)	Unit Pick up (Cubic Yds/Mile)	Completeness (%)
	Arterial	OC		0.00			
		CG			0.00		
	Residential	OC		0.00			
		CG			12.89	40.88	3.17
Totals				12.89	40.88	3.17	100

Sector 31	EPA Category	Drainage	Street Miles	Pickup Miles	Total Pick up (Cubic Yards)	Unit Pick up (Cubic Yds/Mile)	Completeness (%)
	Arterial	OC		0.00			
		CG			0.00		
	Residential	OC					
		CG			9.92		
		Mixed			18.81		100
Totals					18.81		100

Anchorage MS4 Street Sweeping Report for 2013

Sector 32	EPA Category	Drainage	Street Miles	Pickup Miles	Total Pick up (Cubic Yards)	Unit Pick up (Cubic Yds/Mile)	Completeness (%)
	Arterial	OC		0.00			
		CG		0.00			
	Residential	OC					
		CG		13.78			
		Mixed				48.81	100
Totals					48.81		100

Sector 33	EPA Category	Drainage	Street Miles	Pickup Miles	Total Pick up (Cubic Yards)	Unit Pick up (Cubic Yds/Mile)	Completeness (%)
	Arterial	OC		0.00			
		CG		3.44	9.63	2.80	100
	Residential	OC					
		CG		10.79			
		Mixed				61	100
Totals					70.63		100

Sector 34	EPA Category	Drainage	Street Miles	Pickup Miles	Total Pick up (Cubic Yards)	Unit Pick up (Cubic Yds/Mile)	Completeness (%)
	Arterial	OC		0.00			
		CG		4.98	3.7	0.74	100
	Residential	OC					
		CG		13.09			
		Mixed				17	100
Totals					20.7		100

Sector 35	EPA Category	Drainage	Street Miles	Pickup Miles	Total Pick up (Cubic Yards)	Unit Pick up (Cubic Yds/Mile)	Completeness (%)
	Arterial	OC		0.00			
		CG		4.00	3.75	0.94	100
	Residential	OC					
		CG		12.82			
		Mixed				30	100
Totals					33.75		100

Sector 36	EPA Category	Drainage	Street Miles	Pickup Miles	Total Pick up (Cubic Yards)	Unit Pick up (Cubic Yds/Mile)	Completeness (%)
	Arterial	OC		0.00			
		CG		3.90	2.25	0.58	100
	Residential	OC					
		CG		3.30			
		Mixed				6	100
Totals					8.25		100

Sector 37	EPA Category	Drainage	Street Miles	Pickup Miles	Total Pick up (Cubic Yards)	Unit Pick up (Cubic Yds/Mile)	Completeness (%)
	Arterial	OC		0.00			
		CG		0.99	1.54	1.56	100
	Residential	OC					
		CG		16.07			
		Mixed				51	100
Totals					52.54		100

Sector 38	EPA Category	Drainage	Street Miles	Pickup Miles	Total Pick up (Cubic Yards)	Unit Pick up (Cubic Yds/Mile)	Completeness (%)
	Arterial	OC		0.00			
		CG		3.79	11.63	3.07	100
	Residential	OC					
		CG		21.37			
		Mixed				78.5	100
Totals					90.13		100

Sector 39	EPA Category	Drainage	Street Miles	Pickup Miles	Total Pick up (Cubic Yards)	Unit Pick up (Cubic Yds/Mile)	Completeness (%)
	Arterial	OC		0.00			
		CG		0.00			
	Residential	OC					
		CG		12.82			
		Mixed				70	100
Totals					70		100

Anchorage MS4 Street Sweeping Report for 2013

Sector 40	EPA Category	Drainage	Street Miles	Pickup Miles	Total Pick up (Cubic Yards)	Unit Pick up (Cubic Yds/Mile)	Completeness (%)
	Arterial	OC		0.00			
		CG		3.00	3.75	1.25	100
	Residential	OC					
		CG		10.06			
		Mixed			28.09		100
Totals					31.84		100

Sector 41	EPA Category	Drainage	Street Miles	Pickup Miles	Total Pick up (Cubic Yards)	Unit Pick up (Cubic Yds/Mile)	Completeness (%)
	Arterial	OC		0.00			
		CG		0.00			
	Residential	OC					
		CG		15.38			
		Mixed			34.13		100
Totals					34.13		100

Sector 42	EPA Category	Drainage	Street Miles	Pickup Miles	Total Pick up (Cubic Yards)	Unit Pick up (Cubic Yds/Mile)	Completeness (%)
	Arterial	OC		0.00			
		CG		0.00			
	Residential	OC					
		CG		13.15			
		Mixed			27.5		100
Totals					27.5		100

Sector 43	EPA Category	Drainage	Street Miles	Pickup Miles	Total Pick up (Cubic Yards)	Unit Pick up (Cubic Yds/Mile)	Completeness (%)
	Arterial	OC		0.00			
		CG		0.00			
	Residential	OC					
		CG		12.82			
		Mixed			67.5		100
Totals					67.5		100

Sector 44	EPA Category	Drainage	Street Miles	Pickup Miles	Total Pick up (Cubic Yards)	Unit Pick up (Cubic Yds/Mile)	Completeness (%)
	Arterial	OC		0.00			
		CG		1.41	1.53	1.09	100
	Residential	OC					
		CG		27.28			
		Mixed			160.63		100
Totals					162.16		100

Sector 45	EPA Category	Drainage	Street Miles	Pickup Miles	Total Pick up (Cubic Yards)	Unit Pick up (Cubic Yds/Mile)	Completeness (%)
	Arterial	OC		0.00			
		CG		3.00	3.75	1.25	100
	Residential	OC					
		CG		6.67			
		Mixed			31.84		100
Totals					35.59		100

Sector 46	EPA Category	Drainage	Street Miles	Pickup Miles	Total Pick up (Cubic Yards)	Unit Pick up (Cubic Yds/Mile)	Completeness (%)
	Arterial	OC		0.00			
		CG		0.00			
	Residential	OC					
		CG		15.33			
		Mixed			31.35		100
Totals				15.33	31.35		100

Sector 47	EPA Category	Drainage	Street Miles	Pickup Miles	Total Pick up (Cubic Yards)	Unit Pick up (Cubic Yds/Mile)	Completeness (%)
	Arterial	OC		0.00			
		CG		0.00			
	Residential	OC					
		CG		12.89			
		Mixed			68		100
Totals					68		100

Anchorage MS4 Street Sweeping Report for 2013

Sector 48	EPA Category	Drainage	Street Miles	Pickup Miles	Total Pick up (Cubic Yards)	Unit Pick up (Cubic Yds/Mile)	Completeness (%)
	Arterial	OC		0.00			
		CG		5.11	6	1.17	100
	Residential	OC					
		CG		30.45			
		Mixed			108.88		100
Totals					114.88		100

Sector 49	EPA Category	Drainage	Street Miles	Pickup Miles	Total Pick up (Cubic Yards)	Unit Pick up (Cubic Yds/Mile)	Completeness (%)
	Arterial	OC		0.00			
		CG		0.00			
	Residential	OC					
		CG		14.91			
		Mixed			43.88		100
Totals					43.88		100

Sector 50	EPA Category	Drainage	Street Miles	Pickup Miles	Total Pick up (Cubic Yards)	Unit Pick up (Cubic Yds/Mile)	Completeness (%)
	Arterial	OC		0.00			
		CG		12.47	6.64	0.53	100
	Residential	OC					
		CG		17.10			
		Mixed			30.9		100
Totals					37.54		100

Sector 51	EPA Category	Drainage	Street Miles	Pickup Miles	Total Pick up (Cubic Yards)	Unit Pick up (Cubic Yds/Mile)	Completeness (%)
	Arterial	OC		0.00			
		CG		0.00			
	Residential	OC					
		CG		14.71			
		Mixed			39.68		100
Totals					39.68		100

Sector 52	EPA Category	Drainage	Street Miles	Pickup Miles	Total Pick up (Cubic Yards)	Unit Pick up (Cubic Yds/Mile)	Completeness (%)
	Arterial	OC		0.00			
		CG		1.85	5.78	3.12	100
	Residential	OC					
		CG		20.26			
		Mixed			32.38		100
Totals					38.16		100

Sector 53	EPA Category	Drainage	Street Miles	Pickup Miles	Total Pick up (Cubic Yards)	Unit Pick up (Cubic Yds/Mile)	Completeness (%)
	Arterial	OC		0.00			
		CG		0.00			
	Residential	OC					
		CG		12.25			
		Mixed			18		100
Totals					18		100

Sector 54	EPA Category	Drainage	Street Miles	Pickup Miles	Total Pick up (Cubic Yards)	Unit Pick up (Cubic Yds/Mile)	Completeness (%)
	Arterial	OC		0.00			
		CG		2.50	3.75	1.50	100
	Residential	OC					
		CG		0.74			
		Mixed			6		100
Totals					9.75		100

Sector 55	EPA Category	Drainage	Street Miles	Pickup Miles	Total Pick up (Cubic Yards)	Unit Pick up (Cubic Yds/Mile)	Completeness (%)
	Arterial	OC		0.00			
		CG		0.00			
	Residential	OC					
		CG		2.32			
		Mixed			13.38		100
Totals					13.38		100

Anchorage MS4 Street Sweeping Report for 2013

Sector 56	EPA Category	Drainage	Street Miles	Pickup Miles	Total Pick up (Cubic Yards)	Unit Pick up (Cubic Yds/Mile)	Completeness (%)
	Arterial	OC		0.00			
		CG		0.00			
	Residential	OC					
		CG		14.21			
		Mixed			No data reported		0
Totals					No data reported		0

Sector 57	EPA Category	Drainage	Street Miles	Pickup Miles	Total Pick up (Cubic Yards)	Unit Pick up (Cubic Yds/Mile)	Completeness (%)
	Arterial	OC		0.00			
		CG		1.48	3.75	2.53	100
	Residential	OC					
		CG		32.15			
		Mixed			49.63		100
Totals					53.38		100

Sector 58	EPA Category	Drainage	Street Miles	Pickup Miles	Total Pick up (Cubic Yards)	Unit Pick up (Cubic Yds/Mile)	Completeness (%)
	Arterial	OC		0.00			
		CG					
		Mixed			2.89		
	Residential	OC		0.00			
		CG		1.32	3.63	2.74	100
Totals				1.32	6.52		100

Sector 59	EPA Category	Drainage	Street Miles	Pickup Miles	Total Pick up (Cubic Yards)	Unit Pick up (Cubic Yds/Mile)	Completeness (%)
	Arterial	OC		0.00			
		CG					
	Residential	OC			1.88		100
		CG		0.00			
		Mixed					
Totals					1.88		100

Sector 60	EPA Category	Drainage	Street Miles	Pickup Miles	Total Pick up (Cubic Yards)	Unit Pick up (Cubic Yds/Mile)	Completeness (%)
	Arterial	OC					
		CG					
		Mixed			6.5		100
Totals					6.5		100

Anchorage MS4 Street Sweeping Report for 2013

5.2.4. ASD 2013 Detailed Sweeping Reports

Table 5-10 ASD 2013 Sweeping Report

ASD Parking Lot Sweep Summary 2013				
			2013 Sweeps	
ASD SiteCode	Site	Area (sqft)		Swept Total Qty (cyds)
335	Ravenwood Elementary School	89,075		7
220	Girdwood K-8 School	89,969		12
270	Muldoon Elementary School	92,049		12
380	Turnagain Elementary School	93,900		10
364	Susitna Elementary School	94,200		8
260	Mountain View Elementary School	95,101		28
237	Huffman Elementary School	95,228		12
340	Rogers Park Elementary School	96,305		22
450	Polaris K-12 School	97,293		18
410	Wonder Park Elementary School	97,567		7
390	Williwaw Elementary School	97,956		14
320	O'Malley Elementary School	98,189		11
118	Bear Valley Elementary School	98,474		13
330	Rabbit Creek Elementary School	99,865		12
112	Alpenglow Elementary School	102,825		7
363	Trailside Elementary School	103,834		14
130	Campbell Elementary School	104,000		10
418	Gladys Wood Elementary School	104,344		12
125	Bowman Elementary School	106,000		20
362	Spring Hill Elementary School	106,000		22
250	Lake Otis Elementary School	106,173		16
280	North Star Elementary School	106,780		9
116	Bayshore Elementary School	106,792		14
290	Northern Lights ABC School	108,974		20
248	Lake Hood Elementary School	114,600		19
300	Northwood ABC Elementary School	118,491		20
120	Birchwood ABC Elementary School	119,236		16
242	Kasuun Elementary School	119,441		18
384	Tyson Elementary School	120,690		12
400	Willow Crest Elementary School	124,285		17
345	Russian Jack Elementary School	128,685		14
170	Chugiak Elementary School	140,875		10
760, 850	West High/ Romig Middle School	176,826		52

Anchorage MS4 Street Sweeping Report for 2013

ASD Parking Lot Sweep Summary 2013				
			2013 Sweeps	
ASD SiteCode	Site	Area (sqft)		Swept Total Qty (cyds)
805	King Career Center	144,663		32
730	Gruening Middle School	150,000		14
246	Kincaid Elementary School	152,789		20
750	Mears Middle School	156,806		16
710	Clark Middle School	168,224		16
740	Hanshew Middle School	169,175		24
785	Begich Middle School	177,442		26
770	Wendler Middle School	193,293		28
780	Goldenview Middle School	201,993		22
755	Mirror Lake Middle School	203,260		26
865	Eagle River High School	275,595		34
810	Chugiak High School	325,000		42
860	South High School	340,669		37
800	Bartlett High School	412,961		54
820, 150	Dimond High/ Chinook Elementary	580,883		38
830	East High School	459,000		64
840	Service High School	473,795		52
700, 160	Central Middle/ Chugach Elementary	116,792		15
Total		8,256,362		1068
Unit Pick Up (cyds/acre)				5.6

Anchorage MS4 Street Sweeping Report for 2013

5.2.5. 2013 Changes to Sweeping and Basis for Changes

Table 5-11 CBERRRSA 2013 Changes to Swept Streets

2013 CBERRRSA Sweep Changes										
OpArea	Change Type	Name ID	Street From	Street To	Sweep ID	EPA Category	Drainage Type	StMiles	PUMiles	SweepPrac
B	1	TERRACE CIRCLE	TERRACE LANE	N&S CUL DE SAC END	5428	RESIDENTIAL	OPNCHANNL	0.12		TANDEM VAC
C	2	MOUNT EKLUTNA DR 2	ANTHEM PLACE	SCHAFF DR	5587	RESIDENTIAL	OPNCHANNL	0.08		KICK
C	1	GLENN HILL CIRCLE	CHAPEL DR	END OF CUL DE SAC	5520	RESIDENTIAL	OPNCHANNL	0.02		TANDEM VAC
C	1	REBECCA HILL CIRCLE	SKI RD	END OF CUL DE SAC	5621	RESIDENTIAL	OPNCHANNL	0.11		TANDEM VAC
C	1	HOMESTEAD RD@E.OBERG	OBERG RD	22727 BARON DR	5544	RESIDENTIAL	OPNCHANNL	0.20		TANDEM VAC
C	3	CONLEY AVENUE	DAVIDSON DR	EAST END		RESIDENTIAL	OPNCHANNL	0.12		KICK
B	3	RASMUSSEN STREET	OLD PIONEER DR	SOUTH END		RESIDENTIAL	OPNCHANNL	0.12		KICK
C	3	FRIENDSHIP LANE	OBERG RD	WEST END OF PAVEMENT		RESIDENTIAL	OPNCHANNL	0.07		KICK
B	4	MCKINLEY VIEW AVE	N. BIRCHWOOD	WEST END		RESIDENTIAL	C&G	0.06	0.12	TANDEM VAC
A	4	CHARMLEY CIRCLE	NIKITA DR	END OF CUL DE SAC		RESIDENTIAL	C&G	0.07	0.14	TANDEM VAC
A	4	STEPHEN VALLEY DR	VASILI DRIVE	WEST		RESIDENTIAL	C&G	0.05	0.10	TANDEM VAC
A	4	ROSSER DR	STEPHEN VALLEY DR	STINEBURG DR		RESIDENTIAL	C&G	0.28	0.56	TANDEM VAC

Change Type Key
 1 = Road segment was transferred from Kick Broom inventory to Pick Up inventory
 2 = Road segment was transferred from Pick Up inventory to Kick Broom inventory
 3 = Road segment paved in 2013 and added to Kick Broom inventory
 4 = Road segment added to Pick Up inventory in 2013

Table 5-12 ADOT&PF 2013 Changes to Swept Streets

2013 DOT Sweep Changes										
OpArea	Change Type	NAME ID	Street From	Street To	Sweep ID	EPA Category	Drainage Type	Street Miles	PU Miles	SweepPrac
A	1	5th Avenue (b)	L Street	Gambell Street	4000	Arterial	C&G	1.09	2.18	Tandem Vac
A	1	6th Avenue (b)	L Street	Gambell Street	4001	Arterial	C&G	1.09	2.18	Tandem Vac
B	2	Victor Road	West 100th Ave	Dimond Blvd	4091	Residential	Mixed	0.51	1.02	Tandem Vac
A	3	Old Eagle River Road	Monte Road	End of Road	7008	Residential	OpnChnnl	0.65	1.29	Tandem Vac
B	4	Dimond Boulevard	Jewel Lake Road	Brayton Dr	4054	Arterial	C&G	4.80	17.77	Tandem Vac
B	4	Dimond/Minn. Ramps	North	South	4053	Arterial	OpnChnnl	0.88	1.77	Tandem Vac

Change Type Key
 1 = Road segment added halfway to 2013 sweep list, swept according to EPA category during 2013.
 2 = Road segment changed maintenance responsibility to MOA, removed from DOT sweep list.
 3 = Road segment swept by CBERRSA under maintenance ag